

## Product datasheet for **TA348924**

### Myosin Phosphatase (PPP1R12A) Rabbit Polyclonal Antibody

#### Product data:

Product Type:	Primary Antibodies
Applications:	WB
Recommended Dilution:	WB: 1:1000
Reactivity:	Human, Mouse, Rat
Modifications:	Phospho-specific
Host:	Rabbit
Isotype:	IgG
Clonality:	Polyclonal
Immunogen:	The immunogen for anti-Phospho-MYPT1 (Thr853) Antibody: The antiserum was produced against synthesized peptide derived from human MYPT1 around the phosphorylation site of Thr853.
Formulation:	Rabbit IgG in phosphate buffered saline , pH 7.4, 150mM NaCl, 0.02% sodium azide and 50% glycerol.Store at -20 ?.Stable for 12 months from date of receipt
Concentration:	lot specific
Purification:	Immunogen affinity purified
Conjugation:	Unconjugated
Storage:	Store at -20°C as received.
Stability:	Stable for 12 months from date of receipt.
Predicted Protein Size:	115 kDa
Gene Name:	protein phosphatase 1 regulatory subunit 12A
Database Link:	<a href="#">NP_002471</a> <a href="#">Entrez Gene 17931 MouseEntrez Gene 116670 RatEntrez Gene 4659 Human O14974</a>
Background:	Key regulator of protein phosphatase 1C (PPP1C). Mediates binding to myosin. As part of the PPP1C complex, involved in dephosphorylation of PLK1. Capable of inhibiting HIF1AN-dependent suppression of HIF1A activity.
Synonyms:	M130; MBS; MYPT1



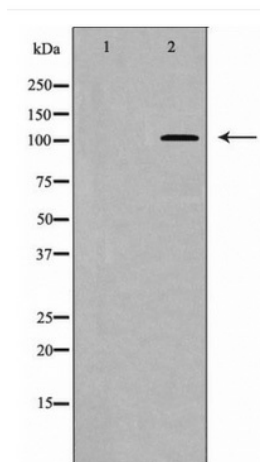
[View online »](#)

**Note:** MYPT1 (Phospho-Thr853) Antibody detects endogenous levels of MYPT1 only when phosphorylated at threonine853.

**Protein Families:** Druggable Genome

**Protein Pathways:** Focal adhesion, Long-term potentiation, Regulation of actin cytoskeleton, Vascular smooth muscle contraction

### Product images:



Western blot analysis of MYPT1 (Phospho-Thr853) expression in NIH/3T3 cell extract