

Product datasheet for **TA348923**

MyI12b Rabbit Polyclonal Antibody

Product data:

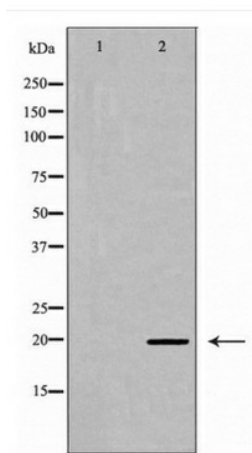
Product Type:	Primary Antibodies
Applications:	WB
Recommended Dilution:	WB: 1:500-1:2000
Reactivity:	Human, Mouse, Rat
Modifications:	Phospho-specific
Host:	Rabbit
Isotype:	IgG
Clonality:	Polyclonal
Immunogen:	The immunogen for anti-Myosin regulatory light chain 2 (Phospho-Ser18) Antibody: A synthesized peptide derived from human Myosin regulatory light chain 2 (Phospho-Ser18)
Formulation:	Rabbit IgG in phosphate buffered saline , pH 7.4, 150mM NaCl, 0.02% sodium azide and 50% glycerol.Store at -20 ?.Stable for 12 months from date of receipt
Concentration:	lot specific
Purification:	Immunogen affinity purified
Conjugation:	Unconjugated
Storage:	Store at -20°C as received.
Stability:	Stable for 12 months from date of receipt.
Predicted Protein Size:	20 kDa
Gene Name:	myosin, light chain 12B, regulatory
Database Link:	NP_075891 Entrez Gene 50685 RatEntrez Gene 103910 HumanEntrez Gene 67938 Mouse Q3THE2
Background:	Myosin regulatory subunit that plays an important role in regulation of both smooth muscle and nonmuscle cell contractile activity via its phosphorylation. Implicated in cytokinesis, receptor capping, and cell locomotion.
Synonyms:	MLC-2; MLC-2A; MLC-B; MLC20; MRLC2; MYLC2B; OTTHUMP00000165808; SHUJUN-1



[View online »](#)

Note: Myosin regulatory light chain 2 (Phospho-Ser18) Antibody detects endogenous levels of total Myosin regulatory light chain 2 (Phospho-Ser18)

Product images:



Western blot analysis of Myosin regulatory light chain 2 (Phospho-Ser18) expression in K562 cell extract