

Product datasheet for **TA348921**

Caspase 1 (CASP1) Rabbit Polyclonal Antibody

Product data:

Product Type:	Primary Antibodies
Applications:	WB
Recommended Dilution:	WB: 1:500-1:2000
Reactivity:	Human, Mouse
Modifications:	Phospho-specific
Host:	Rabbit
Isotype:	IgG
Clonality:	Polyclonal
Immunogen:	The immunogen for anti-Caspase 1 (Phospho-Ser376) Antibody: A synthesized peptide derived from human Caspase 1 (Phospho-Ser376)
Formulation:	Rabbit IgG in phosphate buffered saline , pH 7.4, 150mM NaCl, 0.02% sodium azide and 50% glycerol.Store at -20 ?.Stable for 12 months from date of receipt
Concentration:	lot specific
Purification:	Immunogen affinity purified
Conjugation:	Unconjugated
Storage:	Store at -20°C as received.
Stability:	Stable for 12 months from date of receipt.
Predicted Protein Size:	27 kDa
Gene Name:	caspase 1
Database Link:	NP_150634 Entrez Gene 12362 Mouse Entrez Gene 834 Human P29466
Background:	Thiol protease that cleaves IL-1 beta between an Asp and an Ala, releasing the mature cytokine which is involved in a variety of inflammatory processes. Important for defense against pathogens. Cleaves and activates sterol regulatory element binding proteins (SREBPs). Can also promote apoptosis.
Synonyms:	ICE; IL1BC; P45



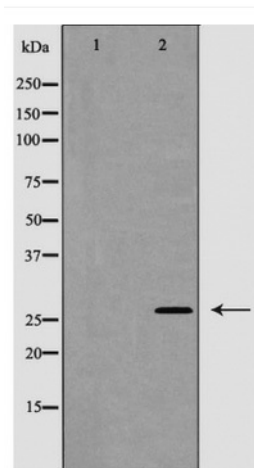
[View online »](#)

Note: Caspase 1 (Phospho-Ser376) Antibody detects endogenous levels of total Caspase 1 (Phospho-Ser376)

Protein Families: Druggable Genome, Protease

Protein Pathways: Amyotrophic lateral sclerosis (ALS), Cytosolic DNA-sensing pathway, NOD-like receptor signaling pathway

Product images:



Western blot analysis of Caspase 1 (Phospho-Ser376) expression in 293 cells