

Product datasheet for **TA348920**

Cyclin C (CCNC) Rabbit Polyclonal Antibody

Product data:

Product Type:	Primary Antibodies
Applications:	WB
Recommended Dilution:	WB: 1:500-1:2000
Reactivity:	Human, Mouse, Rat
Modifications:	Phospho-specific
Host:	Rabbit
Isotype:	IgG
Clonality:	Polyclonal
Immunogen:	The immunogen for anti-Cyclin C (Phospho-Ser275) Antibody: A synthesized peptide derived from human Cyclin C (Phospho-Ser275)
Formulation:	Rabbit IgG in phosphate buffered saline , pH 7.4, 150mM NaCl, 0.02% sodium azide and 50% glycerol.Store at -20 ?.Stable for 12 months from date of receipt
Concentration:	lot specific
Purification:	Immunogen affinity purified
Conjugation:	Unconjugated
Storage:	Store at -20°C as received.
Stability:	Stable for 12 months from date of receipt.
Predicted Protein Size:	33 kDa
Gene Name:	cyclin C
Database Link:	NP_005181 Entrez Gene 51813 Mouse Entrez Gene 114839 Rat Entrez Gene 892 Human P24863
Background:	Component of the Mediator complex, a coactivator involved in regulated gene transcription of nearly all RNA polymerase II-dependent genes. Mediator functions as a bridge to convey information from gene-specific regulatory proteins to the basal RNA polymerase II transcription machinery.
Synonyms:	CycC

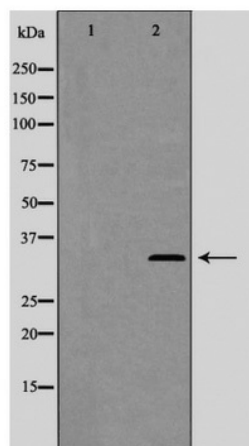


[View online »](#)

Note: Cyclin C (Phospho-Ser275) Antibody detects endogenous levels of total Cyclin C (Phospho-Ser275)

Protein Families: Druggable Genome, Transcription Factors

Product images:



Western blot analysis of Cyclin C (Phospho-Ser275) expression in LOVO cells