

Product datasheet for **TA348919**

Stathmin 1 (STMN1) Rabbit Polyclonal Antibody

Product data:

Product Type:	Primary Antibodies
Applications:	WB
Recommended Dilution:	WB: 1:500-1:2000
Reactivity:	Human, Mouse, Rat
Modifications:	Phospho-specific
Host:	Rabbit
Isotype:	IgG
Clonality:	Polyclonal
Immunogen:	The immunogen for anti-Stathmin 1 (Phospho-Ser24) Antibody: A synthesized peptide derived from human Stathmin 1 (Phospho-Ser24)
Formulation:	Rabbit IgG in phosphate buffered saline , pH 7.4, 150mM NaCl, 0.02% sodium azide and 50% glycerol.Store at -20 ?.Stable for 12 months from date of receipt
Concentration:	lot specific
Purification:	Immunogen affinity purified
Conjugation:	Unconjugated
Storage:	Store at -20°C as received.
Stability:	Stable for 12 months from date of receipt.
Predicted Protein Size:	17 kDa
Gene Name:	stathmin 1
Database Link:	NP_981944 Entrez Gene 16765 Mouse Entrez Gene 29332 Rat Entrez Gene 3925 Human P16949
Background:	This protein is a ubiquitous cytosolic phosphoprotein proposed to function as an intracellular relay integrating regulatory signals of the cellular environment. The encoded protein is involved in the regulation of the microtubule filament system by destabilizing microtubules. It prevents assembly and promotes disassembly of microtubules.
Synonyms:	C1orf215; Lag; LAP18; OP18; PP17; PP19; PR22; SMN

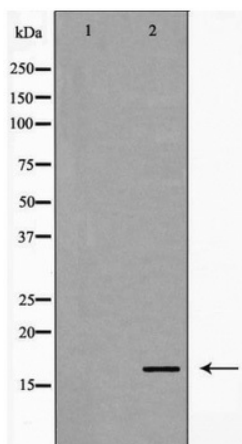


[View online »](#)

Note: Stathmin 1 (Phospho-Ser24) Antibody detects endogenous levels of total Stathmin 1 (Phospho-Ser24)

Protein Pathways: MAPK signaling pathway

Product images:



Western blot analysis of Stathmin 1 (Phospho-Ser24) expression in Jurkat cells