

## Product datasheet for **TA348916**

### Caveolin 2 (CAV2) Rabbit Polyclonal Antibody

#### Product data:

Product Type:	Primary Antibodies
Applications:	WB
Recommended Dilution:	WB: 1:500-1:2000
Reactivity:	Human
Modifications:	Phospho-specific
Host:	Rabbit
Isotype:	IgG
Clonality:	Polyclonal
Immunogen:	The immunogen for anti-Caveolin 2 (Phospho-Tyr27) Antibody: A synthesized peptide derived from human Caveolin 2 (Phospho-Tyr27)
Formulation:	Rabbit IgG in phosphate buffered saline , pH 7.4, 150mM NaCl, 0.02% sodium azide and 50% glycerol.Store at -20 ?.Stable for 12 months from date of receipt
Concentration:	lot specific
Purification:	Immunogen affinity purified
Conjugation:	Unconjugated
Storage:	Store at -20°C as received.
Stability:	Stable for 12 months from date of receipt.
Predicted Protein Size:	27 kDa
Gene Name:	caveolin 2
Database Link:	<a href="#">NP_937855</a> <a href="#">Entrez Gene 858 Human</a> <a href="#">P51636</a>
Background:	May act as a scaffolding protein within caveolar membranes. Interacts directly with G-protein alpha subunits and can functionally regulate their activity. Acts as an accessory protein in conjunction with CAV1 in targeting to lipid rafts and driving caveolae formation.
Synonyms:	CAV



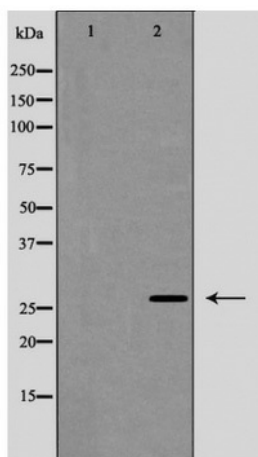
[View online »](#)

**Note:** Caveolin 2 (Phospho-Tyr27) Antibody detects endogenous levels of total Caveolin 2 (Phospho-Tyr27)

**Protein Families:** Druggable Genome, Transmembrane

**Protein Pathways:** Focal adhesion

**Product images:**



Western blot analysis of Caveolin 2 (Phospho-Tyr27) expression in Human fetal lung lysate