

## Product datasheet for **TA348915**

### EIF4B Rabbit Polyclonal Antibody

#### Product data:

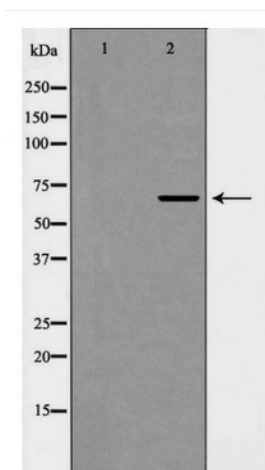
Product Type:	Primary Antibodies
Applications:	WB
Recommended Dilution:	WB: 1:500-1:2000
Reactivity:	Human, Mouse
Modifications:	Phospho-specific
Host:	Rabbit
Isotype:	IgG
Clonality:	Polyclonal
Immunogen:	The immunogen for anti-eIF4B (Phospho-Ser422) Antibody: A synthesized peptide derived from human eIF4B (Phospho-Ser422)
Formulation:	Rabbit IgG in phosphate buffered saline , pH 7.4, 150mM NaCl, 0.02% sodium azide and 50% glycerol.Store at -20 ?.Stable for 12 months from date of receipt
Concentration:	lot specific
Purification:	Immunogen affinity purified
Conjugation:	Unconjugated
Storage:	Store at -20°C as received.
Stability:	Stable for 12 months from date of receipt.
Predicted Protein Size:	69 kDa
Gene Name:	eukaryotic translation initiation factor 4B
Database Link:	<a href="#">NP_001408</a> <a href="#">Entrez Gene 75705 Mouse</a> <a href="#">Entrez Gene 1975 Human</a> <a href="#">P23588</a>
Background:	Required for the binding of mRNA to ribosomes. Functions in close association with EIF4-F and EIF4-A. Binds near the 5'-terminal cap of mRNA in presence of EIF-4F and ATP. Promotes the ATPase activity and the ATP-dependent RNA unwinding activity of both EIF4-A and EIF4-F.
Synonyms:	EIF-4B; PRO1843
Note:	eIF4B (Phospho-Ser422) Antibody detects endogenous levels of total eIF4B (Phospho-Ser422)



[View online »](#)

Protein Pathways: mTOR signaling pathway

### Product images:



Western blot analysis of eIF4B (Phospho-Ser422) expression in HepG2 cells