

Product datasheet for **TA348914**

CD247 Rabbit Polyclonal Antibody

Product data:

Product Type:	Primary Antibodies
Applications:	WB
Recommended Dilution:	WB: 1:500-1:2000
Reactivity:	Human, Mouse
Modifications:	Phospho-specific
Host:	Rabbit
Isotype:	IgG
Clonality:	Polyclonal
Immunogen:	The immunogen for anti-CD3 ? (Phospho-Tyr142) Antibody: A synthesized peptide derived from human CD3 ? (Phospho-Tyr142)
Formulation:	Rabbit IgG in phosphate buffered saline , pH 7.4, 150mM NaCl, 0.02% sodium azide and 50% glycerol.Store at -20 ?.Stable for 12 months from date of receipt
Concentration:	lot specific
Purification:	Immunogen affinity purified
Conjugation:	Unconjugated
Storage:	Store at -20°C as received.
Stability:	Stable for 12 months from date of receipt.
Predicted Protein Size:	19 kDa
Gene Name:	CD247 molecule
Database Link:	NP_932170 Entrez Gene 12503 Mouse Entrez Gene 919 Human P20963
Background:	Defects in CD3D are a cause of severe combined immunodeficiency autosomal recessive T-cell-negative/B-cell-positive/NK-cell-positive (T(-)/B(+)/NK(+)) SCID [MIM:608971]. A form of severe combined immunodeficiency (SCID), a genetically and clinically heterogeneous group of rare congenital disorders characterized by impairment of both humoral and cell-mediated immunity, leukopenia, and low or absent antibody levels.



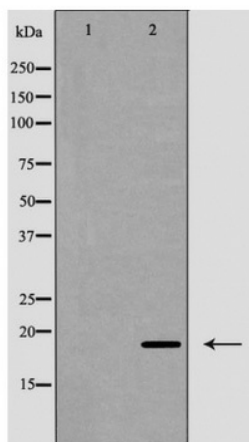
[View online »](#)

Synonyms: CD3-ZETA; CD3H; CD3Q; CD3Z; IMD25; T3Z; TCRZ

Note: CD3 ? (Phospho-Tyr142) Antibody detects endogenous levels of total CD3 ? (Phospho-Tyr142)

Protein Families: Druggable Genome, Transmembrane

Protein Pathways: Natural killer cell mediated cytotoxicity, T cell receptor signaling pathway

Product images:

Western blot analysis of CD3 ? (Phospho-Tyr142) expression in Jurkat cell lysa