

## Product datasheet for **TA348912**

### ATM Rabbit Polyclonal Antibody

#### Product data:

Product Type:	Primary Antibodies
Applications:	WB
Recommended Dilution:	WB: 1:500-1:1000
Reactivity:	Human
Modifications:	Phospho-specific
Host:	Rabbit
Isotype:	IgG
Clonality:	Polyclonal
Immunogen:	The immunogen for anti-ATM(Phospho-Ser1981) Antibody: Peptide sequence around phosphorylation site of serine 1981 (E-G-S(p)-Q-S) derived from Human ATM.
Formulation:	Rabbit IgG in phosphate buffered saline , pH 7.4, 150mM NaCl, 0.02% sodium azide and 50% glycerol.Store at -20 ?.Stable for 12 months from date of receipt
Concentration:	lot specific
Conjugation:	Unconjugated
Storage:	Store at -20°C as received.
Stability:	Stable for 12 months from date of receipt.
Predicted Protein Size:	350kd
Gene Name:	ATM serine/threonine kinase
Database Link:	<a href="#">NP_000042</a> <a href="#">Entrez Gene 472 Human</a> <a href="#">Q13315</a>



[View online »](#)

**Background:**

ATM encoded by this gene belongs to the PI3/PI4-kinase family. This protein is an important cell cycle checkpoint kinase that phosphorylates; thus, it functions as a regulator of a wide variety of downstream proteins, including tumor suppressor proteins p53 and BRCA1, checkpoint kinase CHK2, checkpoint proteins RAD17 and RAD9, and DNA repair protein NBS1. This protein and the closely related kinase ATR are thought to be master controllers of cell cycle checkpoint signaling pathways that are required for cell response to DNA damage and for genome stability. Mutations in this gene are associated with ataxia telangiectasia, an autosomal recessive disorder. Two transcript variants encoding different isoforms have been found for this gene.

**Synonyms:**

AT1; ATA; ATC; ATD; ATDC; ATE; TEL1; TELO1

**Note:**

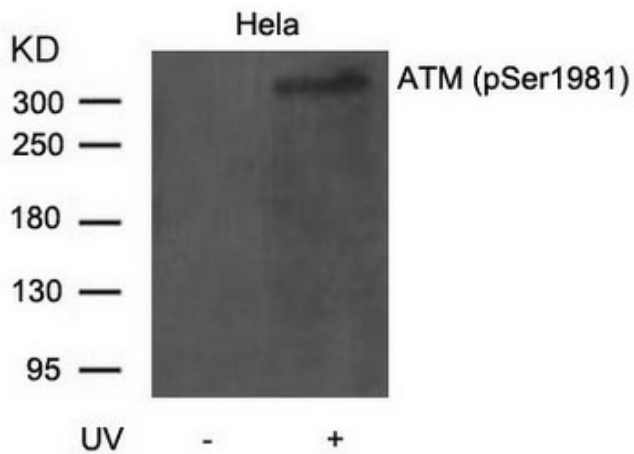
The antibody detects endogenous level of ATM only when phosphorylated at serine 1981.

**Protein Families:**

Druggable Genome, Protein Kinase, Transcription Factors

**Protein Pathways:**

Apoptosis, Cell cycle, p53 signaling pathway

**Product images:**

Western blot analysis of extracts from HeLa cells untreated or treated with UV using ATM (Phospho-Ser1981) Antibody