

Product datasheet for **TA348661**

S6K1 (RPS6KB1) Rabbit Polyclonal Antibody

Product data:

Product Type:	Primary Antibodies
Applications:	WB
Recommended Dilution:	WB: 1:500-1:2000
Reactivity:	Human, Mouse, Rat
Modifications:	Phospho-specific
Host:	Rabbit
Isotype:	IgG
Clonality:	Polyclonal
Immunogen:	The immunogen for anti-Phospho-p70 S6 Kinase (Ser371) Antibody: A synthesized peptide derived from human p70 S6 Kinase around the phosphorylation site of Serine 371
Formulation:	Rabbit IgG in phosphate buffered saline , pH 7.4, 150mM NaCl, 0.02% sodium azide and 50% glycerol. Store at -20?. Stable for 12 months from date of receipt
Concentration:	lot specific
Purification:	Immunogen affinity purified
Conjugation:	Unconjugated
Storage:	Store at -20°C as received.
Stability:	Stable for 12 months from date of receipt.
Predicted Protein Size:	70 kDa
Gene Name:	ribosomal protein S6 kinase B1
Database Link:	NP_003152 Entrez Gene 72508 Mouse Entrez Gene 83840 Rat Entrez Gene 6198 Human P23443
Background:	This gene encodes a member of the RSK (ribosomal S6 kinase) family of serine/threonine kinases. This kinase contains 2 non-identical kinase catalytic domains and phosphorylates several residues of the S6 ribosomal protein.
Synonyms:	p70 S6KA; p70(S6K)-alpha; p70-alpha; p70-S6K; PS6K; S6K; S6K-beta-1; S6K1; STK14A



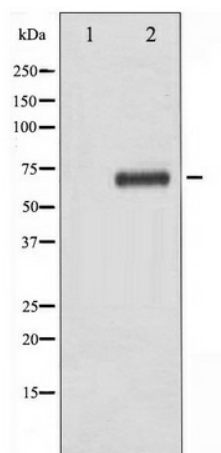
[View online »](#)

Note: Phospho-p70 S6 Kinase (Ser371) Antibody detects endogenous levels of p70 S6 Kinase only when phosphorylated at Serine 371

Protein Families: Druggable Genome, Protein Kinase

Protein Pathways: Acute myeloid leukemia, ErbB signaling pathway, Fc gamma R-mediated phagocytosis, Insulin signaling pathway, mTOR signaling pathway, TGF-beta signaling pathway

Product images:



Western blot analysis of p70 S6 Kinase phosphorylation expression in serum treated COLO205 whole cell lysates, the lane on the left is treated with the antigen-specific peptide.