

## Product datasheet for **TA348626**

### CD31 (PECAM1) Rabbit Polyclonal Antibody

#### Product data:

Product Type:	Primary Antibodies
Applications:	WB
Recommended Dilution:	WB: 1:500-1:2000
Reactivity:	Human, Mouse
Modifications:	Phospho-specific
Host:	Rabbit
Isotype:	IgG
Clonality:	Polyclonal
Immunogen:	The immunogen for anti-Phospho-PECAM-1 (Tyr713) Antibody: A synthesized peptide derived from human PECAM-1 around the phosphorylation site of Tyrosine 713
Formulation:	Rabbit IgG in phosphate buffered saline , pH 7.4, 150mM NaCl, 0.02% sodium azide and 50% glycerol. Store at -20?. Stable for 12 months from date of receipt
Concentration:	lot specific
Purification:	Immunogen affinity purified
Conjugation:	Unconjugated
Storage:	Store at -20°C as received.
Stability:	Stable for 12 months from date of receipt.
Predicted Protein Size:	82 150 kDa
Gene Name:	platelet and endothelial cell adhesion molecule 1
Database Link:	<a href="#">NP_000433</a> <a href="#">Entrez Gene 18613 Mouse</a> <a href="#">Entrez Gene 5175 Human</a> <a href="#">P16284</a>
Background:	PECAM-1 is a cell adhesion molecule expressed on platelets and at endothelial cell intercellular junctions.
Synonyms:	CD31; EndoCAM; endoCAM; GPIIA; PECA1; PECAM-1
Note:	Phospho-PECAM-1 (Tyr713) Antibody detects endogenous levels of PECAM-1 only when phosphorylated at Tyrosine 713

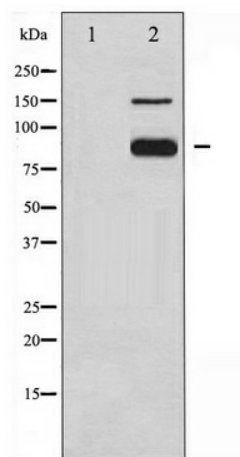


[View online »](#)

**Protein Families:** Druggable Genome, ES Cell Differentiation/IPS, Transmembrane

**Protein Pathways:** Cell adhesion molecules (CAMs), Leukocyte transendothelial migration

**Product images:**



Western blot analysis of PECAM-1 phosphorylation expression in Jurkat whole cell lysates, the lane on the left is treated with the antigen-specific peptide.