

Product datasheet for **TA348574**

HSP90AB1 Rabbit Polyclonal Antibody

Product data:

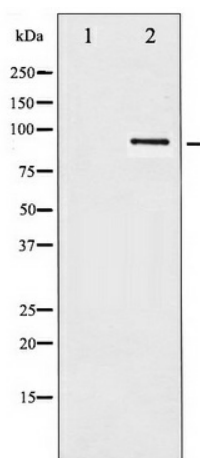
Product Type:	Primary Antibodies
Applications:	WB
Recommended Dilution:	WB: 1:500-1:2000
Reactivity:	Human, Mouse, Rat
Modifications:	Phospho-specific
Host:	Rabbit
Isotype:	IgG
Clonality:	Polyclonal
Immunogen:	The immunogen for anti-Phospho-HSP90B (Ser254) Antibody: A synthesized peptide derived from human HSP90B around the phosphorylation site of Serine 254
Formulation:	Rabbit IgG in phosphate buffered saline , pH 7.4, 150mM NaCl, 0.02% sodium azide and 50% glycerol. Store at -20?. Stable for 12 months from date of receipt
Concentration:	lot specific
Purification:	Immunogen affinity purified
Conjugation:	Unconjugated
Storage:	Store at -20°C as received.
Stability:	Stable for 12 months from date of receipt.
Predicted Protein Size:	90 83 kDa
Gene Name:	heat shock protein 90kDa alpha family class B member 1
Database Link:	NP_031381 Entrez Gene 15516 MouseEntrez Gene 301252 RatEntrez Gene 3326 Human P08238
Background:	Molecular chaperone. Has ATPase activity.
Synonyms:	D6S182; HSP84; HSP90B; HSPC2; HSPCB
Note:	Phospho-HSP90B (Ser254) Antibody detects endogenous levels of HSP90B only when phosphorylated at Serine 254
Protein Families:	Druggable Genome, Stem cell - Pluripotency



[View online »](#)

Protein Pathways:

Antigen processing and presentation, NOD-like receptor signaling pathway, Pathways in cancer, Progesterone-mediated oocyte maturation, Prostate cancer

Product images:

Western blot analysis of HSP90B phosphorylation expression in TNF-a treated HeLa whole cell lysates, the lane on the left is treated with the antigen-specific peptide.