

Product datasheet for **TA348560**

Nucleophosmin (NPM1) Rabbit Polyclonal Antibody

Product data:

Product Type:	Primary Antibodies
Applications:	WB
Recommended Dilution:	WB: 1:500-1:2000
Reactivity:	Human, Mouse, Rat
Modifications:	Phospho-specific
Host:	Rabbit
Isotype:	IgG
Clonality:	Polyclonal
Immunogen:	The immunogen for anti-Phospho-NPM (Thr199) Antibody: A synthesized peptide derived from human NPM around the phosphorylation site of Threonine 199
Formulation:	Rabbit IgG in phosphate buffered saline , pH 7.4, 150mM NaCl, 0.02% sodium azide and 50% glycerol. Store at -20?. Stable for 12 months from date of receipt
Concentration:	lot specific
Purification:	Immunogen affinity purified
Conjugation:	Unconjugated
Storage:	Store at -20°C as received.
Stability:	Stable for 12 months from date of receipt.
Predicted Protein Size:	32 38 kDa
Gene Name:	nucleophosmin (nucleolar phosphoprotein B23, numatrin)
Database Link:	NP_954654 Entrez Gene 18148 Mouse Entrez Gene 25498 Rat Entrez Gene 4869 Human P06748
Background:	a nucleolar protein associated with nucleolar ribonucleoprotein structures and that binds single-stranded nucleic acids. Is a major component of template activating factor (TAF)-III. It plays a role in controlling centrosome duplication, and may function in the assembly and/or transport of the ribosome. Two alternatively spliced isoforms have been described.
Synonyms:	B23; NPM

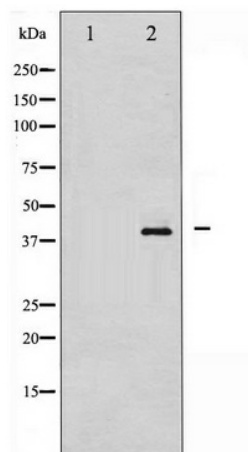


[View online »](#)

Note: Phospho-NPM (Thr199) Antibody detects endogenous levels of NPM only when phosphorylated at Threonine 199

Protein Families: Druggable Genome, Stem cell - Pluripotency, Transcription Factors

Product images:



Western blot analysis of NPM phosphorylation expression in Jurkat whole cell lysates, the lane on the left is treated with the antigen-specific peptide.