

## Product datasheet for **TA348451**

### AKT1 Rabbit Polyclonal Antibody

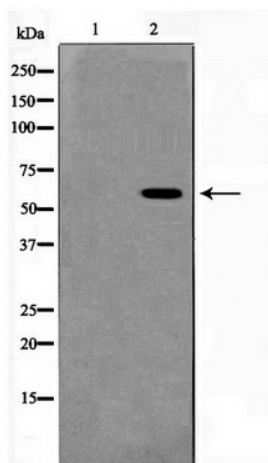
#### Product data:

Product Type:	Primary Antibodies
Applications:	WB
Recommended Dilution:	WB: 1:500-1:2000
Reactivity:	Human, Mouse, Rat
Modifications:	Phospho-specific
Host:	Rabbit
Isotype:	IgG
Clonality:	Polyclonal
Immunogen:	The immunogen for anti-Phospho-Akt(Ser473) Antibody: A synthesized peptide derived from human Akt around the phosphorylation site of Sersine 473
Formulation:	Rabbit IgG in phosphate buffered saline , pH 7.4, 150mM NaCl, 0.02% sodium azide and 50% glycerol. Store at -20?. Stable for 12 months from date of receipt
Concentration:	lot specific
Purification:	Immunogen affinity purified
Conjugation:	Unconjugated
Storage:	Store at -20°C as received.
Stability:	Stable for 12 months from date of receipt.
Predicted Protein Size:	60 kDa
Gene Name:	AKT serine/threonine kinase 1
Database Link:	<a href="#">NP_005154</a> <a href="#">Entrez Gene 11651 Mouse</a> <a href="#">Entrez Gene 24185 Rat</a> <a href="#">Entrez Gene 207 Human</a> <a href="#">P31749</a>



[View online »](#)

- Background:** an AGC kinase that plays a critical role in controlling the balance between survival and AP0ptosis. Phosphorylated and activated by PDK1 in the PI3 kinase pathway. Mediates survival signals downstream of PI3 kinase and several growth factor receptors by phosphorylating AP0pototic proteins. First found in a mouse transforming retrovirus. Tumorigenic in a mouse lymphoma model and activated (by phospho-Akt staining) and/or overexpressed in a number of cancers including breast, prostate, lung, pancreatic, liver, ovarian and colorectal. Inhibitor: RX-0201. Substrates include tuberin, Bad, Forkhead transcription factors, caspase-9, and glycogen synthase kinase-3.
- Synonyms:** AKT; CWS6; PKB; PKB-ALPHA; PRKBA; RAC; RAC-ALPHA
- Note:** Phospho-Akt(Ser473) Antibody detects endogenous levels of Akt only when phosphorylated at Sersine 473
- Protein Families:** Druggable Genome, ES Cell Differentiation/IPS, Protein Kinase
- Protein Pathways:** Acute myeloid leukemia, Adipocytokine signaling pathway, Apoptosis, B cell receptor signaling pathway, Chemokine signaling pathway, Chronic myeloid leukemia, Colorectal cancer, Endometrial cancer, ErbB signaling pathway, Fc epsilon RI signaling pathway, Fc gamma R-mediated phagocytosis, Focal adhesion, Glioma, Insulin signaling pathway, Jak-STAT signaling pathway, MAPK signaling pathway, Melanoma, mTOR signaling pathway, Neurotrophin signaling pathway, Non-small cell lung cancer, Pancreatic cancer, Pathways in cancer, Progesterone-mediated oocyte maturation, Prostate cancer, Renal cell carcinoma, Small cell lung cancer, T cell receptor signaling pathway, Tight junction, Toll-like receptor signaling pathway, VEGF signaling pathway

**Product images:**

Western blot analysis on 293 cell lysate using Phospho-Akt (Ser473) Antibody