

Product datasheet for **TA348446**

APC Rabbit Polyclonal Antibody

Product data:

Product Type:	Primary Antibodies
Applications:	WB
Recommended Dilution:	WB: 1:500-1:2000
Reactivity:	Human
Modifications:	Phospho-specific
Host:	Rabbit
Isotype:	IgG
Clonality:	Polyclonal
Immunogen:	The immunogen for anti-Phospho-APC(Ser2054) Antibody: A synthesized peptide derived from human APC around the phosphorylation site of Sersine 2054
Formulation:	Rabbit IgG in phosphate buffered saline , pH 7.4, 150mM NaCl, 0.02% sodium azide and 50% glycerol. Store at -20?. Stable for 12 months from date of receipt
Concentration:	lot specific
Purification:	Immunogen affinity purified
Conjugation:	Unconjugated
Storage:	Store at -20°C as received.
Stability:	Stable for 12 months from date of receipt.
Predicted Protein Size:	311 kDa
Gene Name:	adenomatous polyposis coli
Database Link:	NP_001120982 Entrez Gene 324 Human P25054
Background:	This gene encodes a tumor suppressor protein that includes among its many intracellular functions one of nuclear export. Defects in this gene cause familial adenomatous polyposis (FAP), an autosomal dominant pre-malignant disease that usually progresses to malignancy. Disease-associated mutations tend to be clustered in a small region designated the mutation cluster region (MCR) and result in a truncated protein product.



[View online »](#)

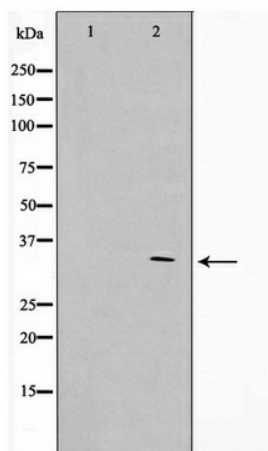
Synonyms: BTPS2; DP2; DP2.5; DP3; GS; PPP1R46

Note: Phospho-APC(Ser2054) Antibody detects endogenous levels of APC only when phosphorylated at Sersine 2054

Protein Families: Druggable Genome

Protein Pathways: Basal cell carcinoma, Colorectal cancer, Endometrial cancer, Pathways in cancer, Regulation of actin cytoskeleton, Wnt signaling pathway

Product images:



Western blot analysis on HuvEc cell lysate using Phospho-APC (Ser2054) Antibody