

Product datasheet for **TA348444**

CTBP1 Rabbit Polyclonal Antibody

Product data:

Product Type:	Primary Antibodies
Applications:	WB
Recommended Dilution:	WB: 1:500-1:2000
Reactivity:	Human, Mouse, Rat
Modifications:	Phospho-specific
Host:	Rabbit
Isotype:	IgG
Clonality:	Polyclonal
Immunogen:	The immunogen for anti-Phospho-CtBP1(Ser422) Antibody: A synthesized peptide derived from human CtBP1 around the phosphorylation site of Sersine 422
Formulation:	Rabbit IgG in phosphate buffered saline , pH 7.4, 150mM NaCl, 0.02% sodium azide and 50% glycerol. Store at -20?. Stable for 12 months from date of receipt
Concentration:	lot specific
Purification:	Immunogen affinity purified
Conjugation:	Unconjugated
Storage:	Store at -20°C as received.
Stability:	Stable for 12 months from date of receipt.
Predicted Protein Size:	48 kDa
Gene Name:	C-terminal binding protein 1
Database Link:	NP_001319 Entrez Gene 13016 Mouse Entrez Gene 29382 Rat Entrez Gene 1487 Human Q13363
Background:	This gene encodes a protein that binds to the C-terminus of adenovirus E1A proteins. This phosphoprotein is a transcriptional repressor and may play a role during cellular proliferation. This protein and the product of a second closely related gene, CTBP2, can dimerize. Both proteins can also interact with a polycomb group protein complex which participates in regulation of gene expression during development. Alternative splicing of transcripts from this gene results in multiple transcript variants.



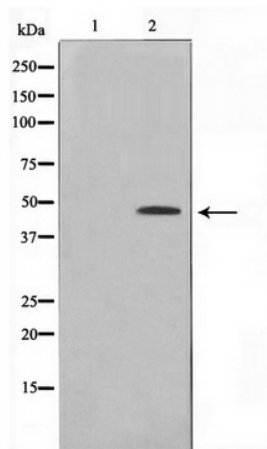
[View online »](#)

Synonyms: BARS

Note: Phospho-CtBP1(Ser422) Antibody detects endogenous levels of CtBP1 only when phosphorylated at Sersine 422

Protein Pathways: Chronic myeloid leukemia, Notch signaling pathway, Pathways in cancer, Wnt signaling pathway

Product images:



Western blot analysis on Jurkat cell lysate using Phospho-CtBP1 (Ser422) Antibody