

Product datasheet for **TA348441**

HCLS1 Rabbit Polyclonal Antibody

Product data:

Product Type:	Primary Antibodies
Applications:	WB
Recommended Dilution:	WB: 1:500-1:2000
Reactivity:	Human
Modifications:	Phospho-specific
Host:	Rabbit
Isotype:	IgG
Clonality:	Polyclonal
Immunogen:	The immunogen for anti-Phospho-HS1(Tyr378) Antibody: A synthesized peptide derived from human HS1 around the phosphorylation site of Tyrosine 378
Formulation:	Rabbit IgG in phosphate buffered saline , pH 7.4, 150mM NaCl, 0.02% sodium azide and 50% glycerol. Store at -20?. Stable for 12 months from date of receipt
Concentration:	lot specific
Purification:	Immunogen affinity purified
Conjugation:	Unconjugated
Storage:	Store at -20°C as received.
Stability:	Stable for 12 months from date of receipt.
Predicted Protein Size:	78 kDa
Gene Name:	hematopoietic cell-specific Lyn substrate 1
Database Link:	NP_005326 Entrez Gene 3059 Human P14317
Background:	Substrate of the antigen receptor-coupled tyrosine kinase. Plays a role in antigen receptor signaling for both clonal expansion and deletion in lymphoid cells. Directly associates with HAX-1, through binding to its C-terminal region. May also be involved in the regulation of gene expression.
Synonyms:	CTTNL; HS1; lckBP1; p75



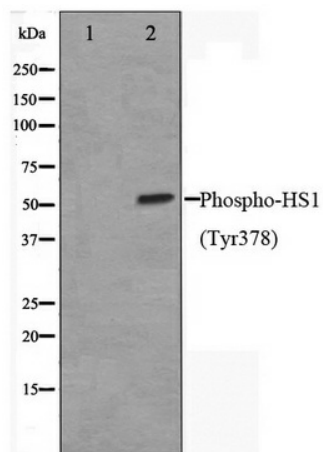
[View online »](#)

Note: Phospho-HS1(Tyr378) Antibody detects endogenous levels of HS1 only when phosphorylated at Tyrosine 378

Protein Families: Transcription Factors

Protein Pathways: Pathogenic Escherichia coli infection, Tight junction

Product images:



Western blot analysis on HepG2 cell lysate using Phospho-HS1 (Tyr378) Antibody