

Product datasheet for **TA348439**

PRAK (MAPKAPK5) Rabbit Polyclonal Antibody

Product data:

| | |
|--------------------------------|--|
| Product Type: | Primary Antibodies |
| Applications: | WB |
| Recommended Dilution: | WB: 1:500-1:2000 |
| Reactivity: | Human, Mouse |
| Modifications: | Phospho-specific |
| Host: | Rabbit |
| Isotype: | IgG |
| Clonality: | Polyclonal |
| Immunogen: | The immunogen for anti-Phospho-MAPKAPK5(Thr182) Antibody: A synthesized peptide derived from human MAPKAPK5 around the phosphorylation site of Threonine 182 |
| Formulation: | Rabbit IgG in phosphate buffered saline , pH 7.4, 150mM NaCl, 0.02% sodium azide and 50% glycerol. Store at -20?. Stable for 12 months from date of receipt |
| Concentration: | lot specific |
| Purification: | Immunogen affinity purified |
| Conjugation: | Unconjugated |
| Storage: | Store at -20°C as received. |
| Stability: | Stable for 12 months from date of receipt. |
| Predicted Protein Size: | 60 kDa |
| Gene Name: | mitogen-activated protein kinase-activated protein kinase 5 |
| Database Link: | NP_003659 Entrez Gene 17165 Mouse Entrez Gene 8550 Human Q8IW41 |
| Background: | The protein encoded by this gene is a member of the serine/threonine kinase family. In response to cellular stress and proinflammatory cytokines, this kinase is activated through its phosphorylation by MAP kinases including MAPK1/ERK, MAPK14/p38-alpha, and MAPK11/p38-beta. In vitro, this kinase phosphorylates heat shock protein HSP27 at its physiologically relevant sites. Two alternately spliced transcript variants of this gene encoding distinct isoforms have been reported. |



[View online »](#)

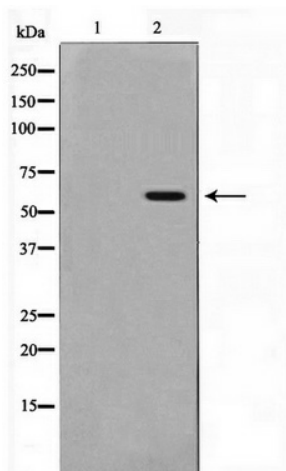
Synonyms: MAPKAP-K5; MK-5; MK5; PRAK

Note: Phospho-MAPKAPK5(Thr182) Antibody detects endogenous levels of MAPKAPK5 only when phosphorylated at Threonine 182

Protein Families: Druggable Genome, Protein Kinase

Protein Pathways: MAPK signaling pathway

Product images:



Western blot analysis on K562 cell lysate using Phospho-MAPKAPK5 (Thr182) Antibody