

Product datasheet for **TA348437**

EPS15 Rabbit Polyclonal Antibody

Product data:

Product Type:	Primary Antibodies
Applications:	WB
Recommended Dilution:	WB: 1:500-1:2000
Reactivity:	Human, Mouse, Rat
Modifications:	Phospho-specific
Host:	Rabbit
Isotype:	IgG
Clonality:	Polyclonal
Immunogen:	The immunogen for anti-Phospho-EPS15(Tyr849) Antibody: A synthesized peptide derived from human EPS15 around the phosphorylation site of Tyrosine 849
Formulation:	Rabbit IgG in phosphate buffered saline , pH 7.4, 150mM NaCl, 0.02% sodium azide and 50% glycerol. Store at -20?. Stable for 12 months from date of receipt
Concentration:	lot specific
Purification:	Immunogen affinity purified
Conjugation:	Unconjugated
Storage:	Store at -20°C as received.
Stability:	Stable for 12 months from date of receipt.
Predicted Protein Size:	98 kDa
Gene Name:	epidermal growth factor receptor pathway substrate 15
Database Link:	NP_001972 Entrez Gene 13858 Mouse Entrez Gene 313474 Rat Entrez Gene 2060 Human P42566
Background:	This gene encodes a protein that is part of the EGFR pathway. The protein is present at clatherin-coated pits and is involved in receptor-mediated endocytosis of EGF. Notably, this gene is rearranged with the HRX/ALL/MLL gene in acute myelogenous leukemias. Alternate transcriptional splice variants of this gene have been observed but have not been thoroughly characterized.



[View online »](#)

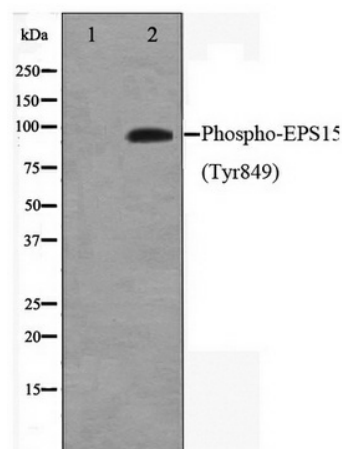
Synonyms: AF-1P; AF1P; MLLT5

Note: Phospho-EPS15(Tyr849) Antibody detects endogenous levels of EPS15 only when phosphorylated at Tyrosine 849

Protein Families: Druggable Genome

Protein Pathways: Endocytosis

Product images:



Western blot analysis on HepG2 cell lysate using Phospho-EPS15 (Tyr849) Antibody