

## Product datasheet for **TA348435**

### FANCG Rabbit Polyclonal Antibody

#### Product data:

Product Type:	Primary Antibodies
Applications:	WB
Recommended Dilution:	WB: 1:500-1:2000
Reactivity:	Human
Modifications:	Phospho-specific
Host:	Rabbit
Isotype:	IgG
Clonality:	Polyclonal
Immunogen:	The immunogen for anti-Phospho-FANCG(Ser383) Antibody: A synthesized peptide derived from human FANCG around the phosphorylation site of Sersine 383
Formulation:	Rabbit IgG in phosphate buffered saline , pH 7.4, 150mM NaCl, 0.02% sodium azide and 50% glycerol. Store at -20?. Stable for 12 months from date of receipt
Concentration:	lot specific
Purification:	Immunogen affinity purified
Conjugation:	Unconjugated
Storage:	Store at -20°C as received.
Stability:	Stable for 12 months from date of receipt.
Predicted Protein Size:	69 kDa
Gene Name:	Fanconi anemia complementation group G
Database Link:	<a href="#">NP_004620</a> <a href="#">Entrez Gene 2189 Human</a> <a href="#">O15287</a>
Background:	FANCG DNA repair protein that may operate in a postreplication repair or a cell cycle checkpoint function. May be implicated in interstrand DNA cross-link repair and in the maintenance of normal chromosome stability. Candidate tumor suppressor gene. Belongs to the multisubunit FA complex composed of FANCA, FANCB, FANCC, FANCE, FANCF, FANCG, FANCL/PHF9 and FANCM. The complex is not found in FA patients. Note: This description may include information from UniProtKB.



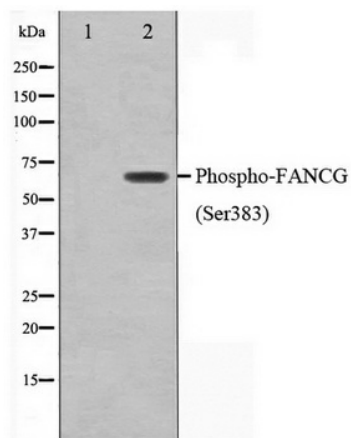
[View online »](#)

**Synonyms:** FAG; XRCC9

**Note:** Phospho-FANCG(Ser383) Antibody detects endogenous levels of FANCG only when phosphorylated at Sersine 383

**Protein Families:** Druggable Genome

**Product images:**



Western blot analysis on K562 cell lysate using Phospho-FANCG (Ser383) Antibody