

Product datasheet for **TA348434**

Paxillin (PXN) Rabbit Polyclonal Antibody

Product data:

Product Type:	Primary Antibodies
Applications:	WB
Recommended Dilution:	WB: 1:500-1:2000
Reactivity:	Human, Mouse, Rat
Modifications:	Phospho-specific
Host:	Rabbit
Isotype:	IgG
Clonality:	Polyclonal
Immunogen:	The immunogen for anti-Phospho-Paxillin(Ser178) Antibody: A synthesized peptide derived from human Paxillin around the phosphorylation site of Sersine 178
Formulation:	Rabbit IgG in phosphate buffered saline , pH 7.4, 150mM NaCl, 0.02% sodium azide and 50% glycerol. Store at -20?. Stable for 12 months from date of receipt
Concentration:	lot specific
Purification:	Immunogen affinity purified
Conjugation:	Unconjugated
Storage:	Store at -20°C as received.
Stability:	Stable for 12 months from date of receipt.
Predicted Protein Size:	64 kDa
Gene Name:	paxillin
Database Link:	NP_002850 Entrez Gene 19303 MouseEntrez Gene 360820 RatEntrez Gene 5829 Human P49023
Background:	PXN is a multi-domain cytoskeletal protein that localizes primarily to focal adhesion sites to the extracellular matrix. Phosphorylated by focal adhesion kinase (FAK) and is a component of integrin signaling. Its phosphorylation provides docking sites for recruitment of signaling molecules to focal adhesions. The SH2 domain of Crk binds to tyrosine phosphorylated paxillin. Three alternatively-spliced isoforms have been described.



[View online »](#)

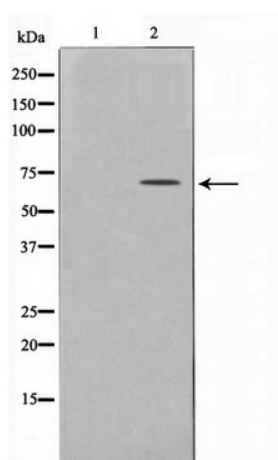
Synonyms: FLJ16691

Note: Phospho-Paxillin(Ser178) Antibody detects endogenous levels of Paxillin only when phosphorylated at Sersine 178

Protein Families: Druggable Genome, Stem cell - Pluripotency

Protein Pathways: Chemokine signaling pathway, Focal adhesion, Leukocyte transendothelial migration, Regulation of actin cytoskeleton, VEGF signaling pathway

Product images:



Western blot analysis on HeLa cell lysate using Phospho-Paxillin (Ser178) Antibody