

## Product datasheet for **TA348431**

### RIP2 (RIPK2) Rabbit Polyclonal Antibody

#### Product data:

Product Type:	Primary Antibodies
Applications:	WB
Recommended Dilution:	WB: 1:500-1:2000
Reactivity:	Human, Mouse
Modifications:	Phospho-specific
Host:	Rabbit
Isotype:	IgG
Clonality:	Polyclonal
Immunogen:	The immunogen for anti-Phospho-RIPK2(Ser176) Antibody: A synthesized peptide derived from human RIPK2 around the phosphorylation site of Sersine 176
Formulation:	Rabbit IgG in phosphate buffered saline , pH 7.4, 150mM NaCl, 0.02% sodium azide and 50% glycerol.
Concentration:	lot specific
Purification:	Immunogen affinity purified
Conjugation:	Unconjugated
Storage:	Store at -20°C as received.
Stability:	Stable for 12 months from date of receipt.
Predicted Protein Size:	70 kDa
Gene Name:	receptor interacting serine/threonine kinase 2
Database Link:	<a href="#">NP_003812</a> <a href="#">Entrez Gene 192656 Mouse</a> <a href="#">Entrez Gene 8767 Human</a> <a href="#">O43353</a>
Background:	RIPK2 a tyrosine kinase-like kinase of the RIPK family. Activates pro-caspase-1 and pro-caspase-8. Potentiates casp-8-mediated apoptosis. May activate NF-kappaB. Note: This description may include information from UniProtKB.
Synonyms:	CARD3; CARDIAK; CCK; GIG30; RICK; RIP2



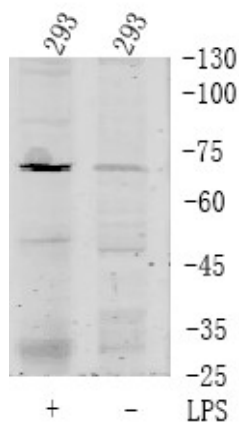
[View online »](#)

**Note:** Phospho-RIPK2(Ser176) Antibody detects endogenous levels of RIPK2 only when phosphorylated at Sersine 176

**Protein Families:** Druggable Genome, Protein Kinase

**Protein Pathways:** Neurotrophin signaling pathway, NOD-like receptor signaling pathway

**Product images:**



Western Blot analysis of 293 cell lysis treated or untreated by LPS using RIPK2 (Phospho-Ser176) antibody.