

Product datasheet for **TA348428**

FER Rabbit Polyclonal Antibody

Product data:

Product Type:	Primary Antibodies
Applications:	WB
Recommended Dilution:	WB: 1:500-1:2000
Reactivity:	Human, Mouse
Modifications:	Phospho-specific
Host:	Rabbit
Isotype:	IgG
Clonality:	Polyclonal
Immunogen:	The immunogen for anti-Phospho-FER(Tyr402) Antibody: A synthesized peptide derived from human FER around the phosphorylation site of Tyrosine 402
Formulation:	Rabbit IgG in phosphate buffered saline , pH 7.4, 150mM NaCl, 0.02% sodium azide and 50% glycerol. Store at -20?. Stable for 12 months from date of receipt
Concentration:	lot specific
Purification:	Immunogen affinity purified
Conjugation:	Unconjugated
Storage:	Store at -20°C as received.
Stability:	Stable for 12 months from date of receipt.
Predicted Protein Size:	85 kDa
Gene Name:	FER tyrosine kinase
Database Link:	NP_005237 Entrez Gene 14158 Mouse Entrez Gene 103921 Mouse Entrez Gene 2241 Human P16591
Background:	Fer protein is a member of the FPS/FES family of nontransmembrane receptor tyrosine kinases. It regulates cell-cell adhesion and mediates signaling from the cell surface to the cytoskeleton via growth factor receptors.
Synonyms:	FerT; Pe1Fe3; Pe1Fe6; Pe1Fe10; Pe1Fe13; PPP1R74; TYK3



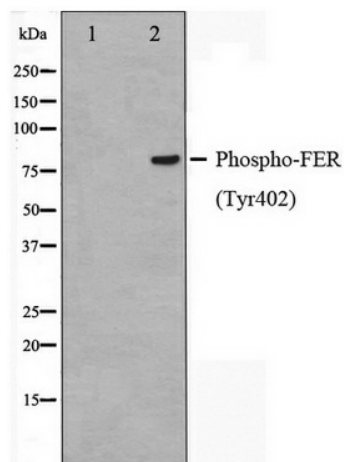
[View online »](#)

Note: Phospho-FER(Tyr402) Antibody detects endogenous levels of FER only when phosphorylated at Tyrosine 402

Protein Families: Druggable Genome, Protein Kinase

Protein Pathways: Adherens junction

Product images:



Western blot analysis on Jurkat cell lysate using Phospho-FER (Tyr402) Antibody