

Product datasheet for **TA348426**

eNOS (NOS3) Rabbit Polyclonal Antibody

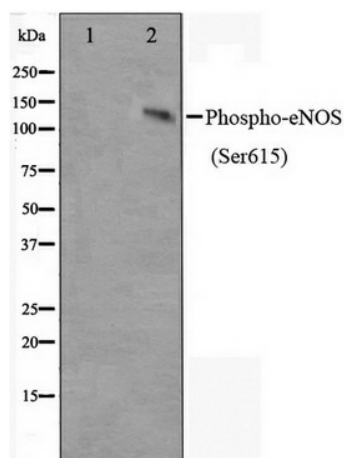
Product data:

Product Type:	Primary Antibodies
Applications:	WB
Recommended Dilution:	WB: 1:500-1:2000
Reactivity:	Human, Mouse, Rat
Modifications:	Phospho-specific
Host:	Rabbit
Isotype:	IgG
Clonality:	Polyclonal
Immunogen:	The immunogen for anti-Phospho-eNOS(Ser615) Antibody: A synthesized peptide derived from human eNOS around the phosphorylation site of Sersine 615
Formulation:	Rabbit IgG in phosphate buffered saline , pH 7.4, 150mM NaCl, 0.02% sodium azide and 50% glycerol. Store at -20?. Stable for 12 months from date of receipt
Concentration:	lot specific
Purification:	Immunogen affinity purified
Conjugation:	Unconjugated
Storage:	Store at -20°C as received.
Stability:	Stable for 12 months from date of receipt.
Predicted Protein Size:	140 kDa
Gene Name:	nitric oxide synthase 3
Database Link:	NP_000594 Entrez Gene 18127 Mouse Entrez Gene 24600 Rat Entrez Gene 4846 Human P29474
Background:	eNOS is an endothelial constitutive nitric oxide synthase. Synthesizes nitric oxide (NO) from arginine and oxygen, which is implicated in vascular smooth muscle relaxation through a cGMP-mediated signal transduction pathway. NO mediates vascular endothelial growth factor (VEGF)-induced angiogenesis in coronary vessels and promotes blood clotting through the activation of platelets.



[View online »](#)

Synonyms:	ECNOS; eNOS
Note:	Phospho-eNOS(Ser615) Antibody detects endogenous levels of eNOS only when phosphorylated at Sersine 615
Protein Families:	Druggable Genome
Protein Pathways:	Alzheimer's disease, Amyotrophic lateral sclerosis (ALS), Arginine and proline metabolism, Calcium signaling pathway, Long-term depression, Metabolic pathways, Pathways in cancer, Small cell lung cancer, VEGF signaling pathway

Product images:

Western blot analysis on K562 cell lysate using Phospho-eNOS (Ser615) Antibody.