

Product datasheet for **TA348424**

HBP1 Rabbit Polyclonal Antibody

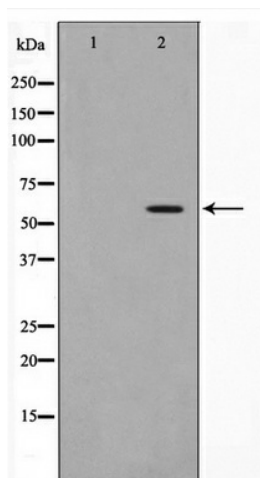
Product data:

Product Type:	Primary Antibodies
Applications:	WB
Recommended Dilution:	WB: 1:500-1:2000
Reactivity:	Human
Modifications:	Phospho-specific
Host:	Rabbit
Isotype:	IgG
Clonality:	Polyclonal
Immunogen:	The immunogen for anti-Phospho-HBP1(Ser402) Antibody: A synthesized peptide derived from human HBP1 around the phosphorylation site of Sersine 402
Formulation:	Rabbit IgG in phosphate buffered saline , pH 7.4, 150mM NaCl, 0.02% sodium azide and 50% glycerol. Store at -20?. Stable for 12 months from date of receipt
Concentration:	lot specific
Purification:	Immunogen affinity purified
Conjugation:	Unconjugated
Storage:	Store at -20°C as received.
Stability:	Stable for 12 months from date of receipt.
Predicted Protein Size:	58 kDa
Gene Name:	HMG-box transcription factor 1
Database Link:	NP_001231191 Entrez Gene 26959 Human O60381
Background:	HBP1 trembl
Synonyms:	FLJ16340
Note:	Phospho-HBP1(Ser402) Antibody detects endogenous levels of HBP1 only when phosphorylated at Sersine 402
Protein Families:	Transcription Factors



[View online »](#)

Product images:



Western blot analysis on A549 cell lysate using Phospho-HBP1 (Ser402) Antibody