

Product datasheet for **TA348422**

MAPK15 Rabbit Polyclonal Antibody

Product data:

Product Type:	Primary Antibodies
Applications:	WB
Recommended Dilution:	WB: 1:500-1:2000
Reactivity:	Human, Mouse
Modifications:	Phospho-specific
Host:	Rabbit
Isotype:	IgG
Clonality:	Polyclonal
Immunogen:	The immunogen for anti-Phospho-ERK8(Thr175+Tyr177) Antibody: A synthesized peptide derived from human ERK8 around the phosphorylation site of Threonine 175 and Tyrosine 177
Formulation:	Rabbit IgG in phosphate buffered saline , pH 7.4, 150mM NaCl, 0.02% sodium azide and 50% glycerol. Store at -20?. Stable for 12 months from date of receipt
Concentration:	lot specific
Purification:	Immunogen affinity purified
Conjugation:	Unconjugated
Storage:	Store at -20°C as received.
Stability:	Stable for 12 months from date of receipt.
Predicted Protein Size:	60 kDa
Gene Name:	mitogen-activated protein kinase 15
Database Link:	NP_620590 Entrez Gene 332110 Mouse Entrez Gene 225689 Human Q8TD08
Background:	ERK7 is phosphorylates MBP in vitro. Interacts with CSK/c-Src, ABL1 and RET. 3 isoforms of the human protein are produced by alternative splicing.
Synonyms:	ERK7; ERK8

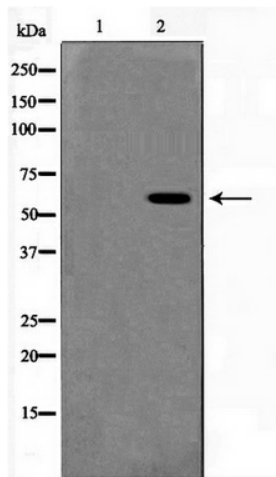


[View online »](#)

Note: Phospho-ERK8(Thr175+Tyr177) Antibody detects endogenous levels of ERK8 only when phosphorylated at Threonine 175 and Tyrosine 177

Protein Families: Druggable Genome, Protein Kinase

Product images:



Western blot analysis on Jurkat cell lysate using Phospho-ERK8 (Thr175+Tyr177) Antibody