

Product datasheet for **TA348421**

Eph receptor A2 (EPHA2) Rabbit Polyclonal Antibody

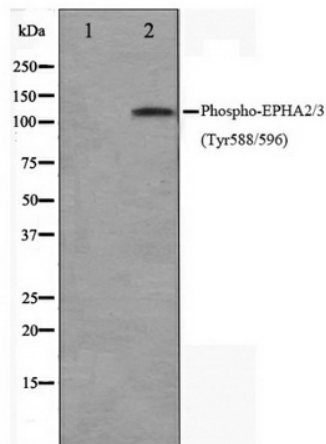
Product data:

Product Type:	Primary Antibodies
Applications:	WB
Recommended Dilution:	WB: 1:500-1:2000
Reactivity:	Human, Mouse, Rat
Modifications:	Phospho-specific
Host:	Rabbit
Isotype:	IgG
Clonality:	Polyclonal
Immunogen:	The immunogen for anti-Phospho-EPHA2/3(Tyr588/596) Antibody: A synthesized peptide derived from human EPHA2/3 around the phosphorylation site of Tyrosine 588 and 596
Formulation:	Rabbit IgG in phosphate buffered saline , pH 7.4, 150mM NaCl, 0.02% sodium azide and 50% glycerol. Store at -20?. Stable for 12 months from date of receipt
Concentration:	lot specific
Purification:	Immunogen affinity purified
Conjugation:	Unconjugated
Storage:	Store at -20°C as received.
Stability:	Stable for 12 months from date of receipt.
Predicted Protein Size:	130 kDa
Gene Name:	EPH receptor A2
Database Link:	NP_004422 Entrez Gene 13836 Mouse Entrez Gene 366492 Rat Entrez Gene 1969 Human P29317



[View online »](#)

- Background:** EphA2 a receptor tyrosine kinase. Receptor for members of the ephrin-A family. Binds to ephrin-A1, -A3, -A4 AND -A5. The Eph receptor tyrosine kinase family, the largest in the tyrosine kinase group, has fourteen members. They bind membrane-anchored ligands, ephrins, at sites of cell-cell contact, regulating the repulsion and adhesion of cells that underlie the establishment, maintenance, and remodeling of patterns of cellular organization. Eph signals are particularly important in regulating cell adhesion and cell migration during development, axon guidance, homeostasis and disease.
- Synonyms:** ARCC2; CTPA; CTPP1; CTRCT6; ECK
- Note:** Phospho-EPHA2/3(Tyr588/596) Antibody detects endogenous levels of EPHA2 and 3 only when phosphorylated at Tyrosine 588 and 596
- Protein Families:** Druggable Genome, Protein Kinase, Transmembrane
- Protein Pathways:** Axon guidance

Product images:

Western blot analysis on HepG2 cell lysate using Phospho-EPHA2/3 (Tyr588/596) Antibody