

## Product datasheet for **TA348416**

### VEGF Receptor 2 (KDR) Rabbit Polyclonal Antibody

#### Product data:

Product Type:	Primary Antibodies
Applications:	WB
Recommended Dilution:	WB: 1:500-1:2000
Reactivity:	Human, Mouse, Rat
Modifications:	Phospho-specific
Host:	Rabbit
Isotype:	IgG
Clonality:	Polyclonal
Immunogen:	The immunogen for anti-Phospho-VEGFR2(Tyr1214) Antibody: A synthesized peptide derived from human VEGFR2 around the phosphorylation site of Tyrosine 1214
Formulation:	Rabbit IgG in phosphate buffered saline , pH 7.4, 150mM NaCl, 0.02% sodium azide and 50% glycerol. Store at -20?. Stable for 12 months from date of receipt
Concentration:	lot specific
Purification:	Immunogen affinity purified
Conjugation:	Unconjugated
Storage:	Store at -20°C as received.
Stability:	Stable for 12 months from date of receipt.
Predicted Protein Size:	152 kDa
Gene Name:	kinase insert domain receptor
Database Link:	<a href="#">NP_002244</a> <a href="#">Entrez Gene 16542 Mouse</a> <a href="#">Entrez Gene 25589 Rat</a> <a href="#">Entrez Gene 3791 Human</a> <a href="#">P35968</a>
Background:	VEGFR-2 is a receptor tyrosine kinase of the VEGFR family. High affinity receptor for VEGF and VEGF-C. Ligand binding induces autophosphorylation and activation. Activated receptor recruits proteins including Shc, GRB2, PI3K, Nck, SHP-1 and SHP-2. Plays a key role in vascular development and regulation of vascular permeability.
Synonyms:	CD309; FLK1; VEGFR; VEGFR2



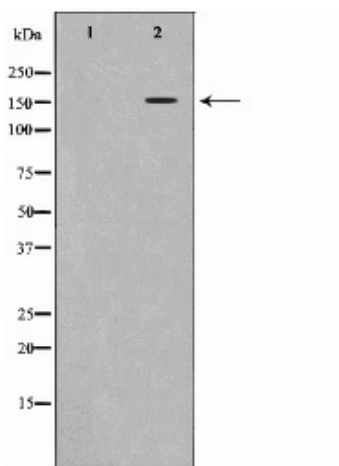
[View online »](#)

**Note:** Phospho-VEGFR2(Tyr1214) Antibody detects endogenous levels of VEGFR2 only when phosphorylated at Tyrosine 1214

**Protein Families:** Druggable Genome, ES Cell Differentiation/IPS, Protein Kinase, Transmembrane

**Protein Pathways:** Cytokine-cytokine receptor interaction, Endocytosis, Focal adhesion, VEGF signaling pathway

**Product images:**



Western blot analysis on K562 cell lysate using Phospho-VEGFR2 (Tyr1214) Antibody