

Product datasheet for **TA348410**

beta Actin (ACTB) Rabbit Polyclonal Antibody

Product data:

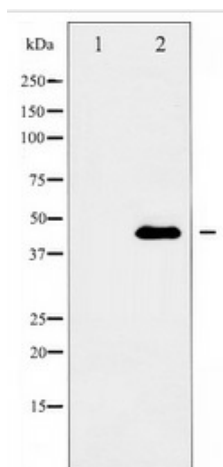
Product Type:	Primary Antibodies
Applications:	WB
Recommended Dilution:	WB: 1:1000-1:10000
Reactivity:	Human, Mouse, Rat
Host:	Rabbit
Isotype:	IgG
Clonality:	Polyclonal
Immunogen:	The immunogen for anti-Beta actin antibody: A synthesized peptide derived from human Beta actin
Formulation:	Rabbit IgG in phosphate buffered saline , pH 7.4, 150mM NaCl, 0.02% sodium azide and 50% glycerol.Store at -20 ?.Stable for 12 months from date of receipt
Concentration:	lot specific
Purification:	Immunogen affinity purified
Conjugation:	Unconjugated
Storage:	Store at -20°C as received.
Stability:	Stable for 12 months from date of receipt.
Predicted Protein Size:	43 kDa
Gene Name:	actin, beta
Database Link:	NP_001092 Entrez Gene 11461 Mouse Entrez Gene 81822 Rat Entrez Gene 60 Human P60709
Background:	Actin, a ubiquitous eukaryotic protein, is the major component of the cytoskeleton. At least six isoforms are known in mammals. Nonmuscle β - and γ -actin, also known as cytoplasmic actin, are predominantly expressed in nonmuscle cells, controlling cell structure and motility.
Synonyms:	BRWS1; PS1TP5BP1
Note:	Beta actin antibody detects endogenous levels of total Beta actin
Protein Families:	ES Cell Differentiation/IPS



[View online »](#)

Protein Pathways:

Adherens junction, Arrhythmogenic right ventricular cardiomyopathy (ARVC), Dilated cardiomyopathy, Focal adhesion, Hypertrophic cardiomyopathy (HCM), Leukocyte transendothelial migration, Pathogenic Escherichia coli infection, Regulation of actin cytoskeleton, Tight junction, Vibrio cholerae infection, Viral myocarditis

Product images:

Western blot analysis of Beta actin expression in HeLa whole cell lysates, the lane on the left is treated with the antigen-specific peptide.