

## Product datasheet for **TA348279**

### BCAR1 Rabbit Polyclonal Antibody

#### Product data:

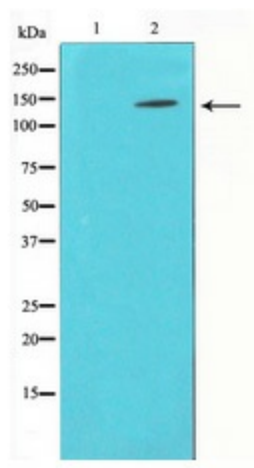
Product Type:	Primary Antibodies
Applications:	WB
Recommended Dilution:	WB: 1:500-1:2000
Reactivity:	Human, Mouse, Rat
Host:	Rabbit
Isotype:	IgG
Clonality:	Polyclonal
Immunogen:	The immunogen for anti-p130 Cas Antibody: A synthesized peptide derived from human p130 Cas
Formulation:	Rabbit IgG in phosphate buffered saline , pH 7.4, 150mM NaCl, 0.02% sodium azide and 50% glycerol.Store at -20 ?.Stable for 12 months from date of receipt
Concentration:	lot specific
Purification:	Immunogen affinity purified
Conjugation:	Unconjugated
Storage:	Store at -20°C as received.
Stability:	Stable for 12 months from date of receipt.
Predicted Protein Size:	93 130 kDa
Gene Name:	BCAR1, Cas family scaffolding protein
Database Link:	<a href="#">NP_055382</a> <a href="#">Entrez Gene 12927 Mouse</a> <a href="#">Entrez Gene 25414 Rat</a> <a href="#">Entrez Gene 9564 Human</a> <a href="#">P56945</a>
Background:	a docking protein containing multiple protein-protein interaction domains. Plays a central coordinating role for tyrosine-kinase-based signaling related to cell adhesion. Implicated in induction of cell migration.
Synonyms:	CAS; CAS1; CASS1; CRKAS; P130Cas
Note:	p130 Cas Antibody detects endogenous levels of total p130 Cas
Protein Families:	Druggable Genome



[View online »](#)

**Protein Pathways:** Chemokine signaling pathway, Focal adhesion, Leukocyte transendothelial migration, Regulation of actin cytoskeleton

**Product images:**



Western blot analysis of p130 Cas expression in NIH-3T3 whole cell lysates, the lane on the left is treated with the antigen-specific peptide.