

## Product datasheet for **TA348198**

### PI 3 Kinase p85 alpha (PIK3R1) Rabbit Polyclonal Antibody

#### Product data:

|                         |  |
|-------------------------|--|
| Product Type:           | Primary Antibodies   |
| Applications:           | WB   |
| Recommended Dilution:   | WB: 1:500-1:2000   |
| Reactivity:             | Human, Mouse, Rat  |
| Host:                   | Rabbit   |
| Isotype:                | IgG  |
| Clonality:              | Polyclonal   |
| Immunogen:              | The immunogen for anti-PI3-kinase p85-alpha Antibody: A synthesized peptide derived from human PI3-kinase p85-alpha  |
| Formulation:            | Rabbit IgG in phosphate buffered saline , pH 7.4, 150mM NaCl, 0.02% sodium azide and 50% glycerol.Store at -20 ?.Stable for 12 months from date of receipt   |
| Concentration:          | lot specific   |
| Conjugation:            | Unconjugated   |
| Storage:                | Store at -20°C as received.  |
| Stability:              | Stable for 12 months from date of receipt.   |
| Predicted Protein Size: | 85 KD  |
| Gene Name:              | phosphoinositide-3-kinase regulatory subunit 1   |
| Database Link:          | <a href="#">NP_852556</a><br><a href="#">Entrez Gene 18708 Mouse</a> <a href="#">Entrez Gene 25513 Rat</a> <a href="#">Entrez Gene 5295 Human</a><br><a href="#">P27986</a>  |
| Background:             | PIK3R1 is a regulatory subunit of phosphoinositide-3-kinase. Mediates binding to a subset of tyrosine-phosphorylated proteins through its SH2 domain. Acts as an adapter, mediating the association of the p110 catalytic unit of the alpha, beta and delta enzymes to the plasma membrane, where p110 phosphorylates inositol lipids. May play an additional role in the regulation of the actin cytoskeleton. Necessary for the insulin-stimulated increase in glucose uptake and glycogen synthesis in insulin-sensitive tissues. |
| Synonyms:               | AGM7; GRB1; IMD36; p85; p85-ALPHA  |
| Note:                   | PI3-kinase p85-alpha Antibody detects endogenous levels of total PI3-kinase p85-alpha  |

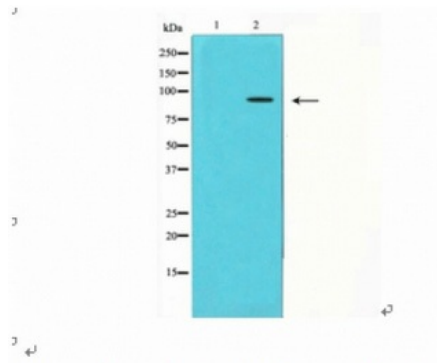


[View online »](#)

**Protein Families:** Druggable Genome

**Protein Pathways:** Acute myeloid leukemia, Apoptosis, B cell receptor signaling pathway, Chemokine signaling pathway, Chronic myeloid leukemia, Colorectal cancer, Endometrial cancer, ErbB signaling pathway, Fc epsilon RI signaling pathway, Fc gamma R-mediated phagocytosis, Focal adhesion, Glioma, Insulin signaling pathway, Jak-STAT signaling pathway, Leukocyte transendothelial migration, Melanoma, mTOR signaling pathway, Natural killer cell mediated cytotoxicity, Neurotrophin signaling pathway, Non-small cell lung cancer, Pancreatic cancer, Pathways in cancer, Phosphatidylinositol signaling system, Progesterone-mediated oocyte maturation, Prostate cancer, Regulation of actin cytoskeleton, Renal cell carcinoma, Small cell lung cancer, T cell receptor signaling pathway, Toll-like receptor signaling pathway, Type II diabetes mellitus, VEGF signaling pathway

### Product images:



Western blot analysis of PI3-kinase p85-alpha expression in COS7 whole cell lysates. The lane on the left is treated with the antigen-specific peptide.

Western blot analysis of PI3-kinase p85-alpha expression in COS7 whole cell lysates, the lane on the left is treated with the antigen-specific peptide.