

Product datasheet for **TA348123**

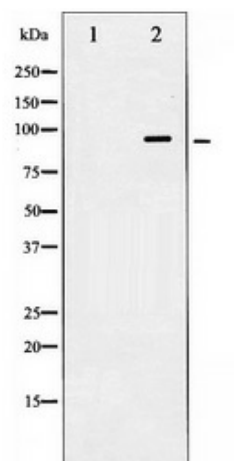
HSP90AB1 Rabbit Polyclonal Antibody

Product data:

Product Type:	Primary Antibodies
Applications:	WB
Recommended Dilution:	WB: 1:500-1:2000
Reactivity:	Human, Mouse, Rat
Host:	Rabbit
Isotype:	IgG
Clonality:	Polyclonal
Immunogen:	The immunogen for anti-HSP90B Antibody: A synthesized peptide derived from human HSP90B
Formulation:	Rabbit IgG in phosphate buffered saline , pH 7.4, 150mM NaCl, 0.02% sodium azide and 50% glycerol.Store at -20 ?.Stable for 12 months from date of receipt
Concentration:	lot specific
Purification:	Immunogen affinity purified
Conjugation:	Unconjugated
Storage:	Store at -20°C as received.
Stability:	Stable for 12 months from date of receipt.
Predicted Protein Size:	96 83 kDa
Gene Name:	heat shock protein 90kDa alpha family class B member 1
Database Link:	NP_031381 Entrez Gene 15516 Mouse Entrez Gene 301252 Rat Entrez Gene 3326 Human P08238
Background:	Molecular chaperone. Has ATPase activity.
Synonyms:	D6S182; HSP84; HSP90B; HSPC2; HSPCB
Note:	HSP90B Antibody detects endogenous levels of total HSP90B
Protein Families:	Druggable Genome, Stem cell - Pluripotency
Protein Pathways:	Antigen processing and presentation, NOD-like receptor signaling pathway, Pathways in cancer, Progesterone-mediated oocyte maturation, Prostate cancer



[View online »](#)

Product images:

Western blot analysis of HSP90B expression in TNF-a treated HeLa whole cell lysates, the lane on the left is treated with the antigen-specific peptide.