

## Product datasheet for **TA348043**

### Eph receptor A4 (EPHA4) Rabbit Polyclonal Antibody

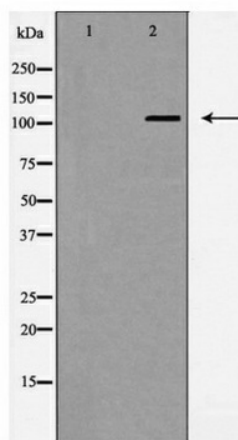
#### Product data:

Product Type:	Primary Antibodies
Applications:	WB
Recommended Dilution:	WB: 1:500-1:1000
Reactivity:	Human, Mouse, Rat
Host:	Rabbit
Isotype:	IgG
Clonality:	Polyclonal
Immunogen:	The immunogen for anti-EPHA4 Antibody: A synthesized peptide
Formulation:	Rabbit IgG in phosphate buffered saline , pH 7.4, 150mM NaCl, 0.02% sodium azide and 50% glycerol.Store at -20 ?.Stable for 12 months from date of receipt
Concentration:	lot specific
Purification:	Immunogen affinity purified
Conjugation:	Unconjugated
Storage:	Store at -20°C as received.
Stability:	Stable for 12 months from date of receipt.
Gene Name:	EPH receptor A4
Database Link:	<a href="#">NP_004429</a> <a href="#">Entrez Gene 13838 Mouse</a> <a href="#">Entrez Gene 316539 Rat</a> <a href="#">Entrez Gene 2043 Human</a> <a href="#">P54764</a>
Background:	Receptor for members of the ephrin-A family. Binds to ephrin-A1, -A4 and -A5. Binds more poorly to ephrin-A2 and -A3. May play a role in a signal transduction process involved in hindbrain pattern formation.
Synonyms:	HEK8; SEK; TYRO1
Note:	EPHA4 Antibody detects endogenous levels of total EPHA4
Protein Families:	Druggable Genome, Protein Kinase, Transmembrane
Protein Pathways:	Axon guidance



[View online »](#)

## Product images:



Western blot analysis of EPHA4 expression in JurKat cells