

## Product datasheet for **TA348039**

### EP300 Rabbit Polyclonal Antibody

#### Product data:

Product Type:	Primary Antibodies
Applications:	WB
Recommended Dilution:	WB: 1:500-1:2000
Reactivity:	Human, Mouse, Rat
Host:	Rabbit
Isotype:	IgG
Clonality:	Polyclonal
Immunogen:	The immunogen for anti-P300/CBP Antibody: A synthesized peptide derived from human P300/CBP
Formulation:	Rabbit IgG in phosphate buffered saline , pH 7.4, 150mM NaCl, 0.02% sodium azide and 50% glycerol.Store at -20 ?.Stable for 12 months from date of receipt
Concentration:	lot specific
Purification:	Immunogen affinity purified
Conjugation:	Unconjugated
Storage:	Store at -20°C as received.
Stability:	Stable for 12 months from date of receipt.
Predicted Protein Size:	300 kDa
Gene Name:	E1A binding protein p300
Database Link:	<a href="#">NP_001420</a> <a href="#">Entrez Gene 328572 MouseEntrez Gene 170915 RatEntrez Gene 2033 Human Q09472</a>
Background:	Functions as histone acetyltransferase and regulates transcription via chromatin remodeling. Acetylates all four core histones in nucleosomes. Histone acetylation gives an epigenetic tag for transcriptional activation. Mediates cAMP-gene regulation by binding specifically to phosphorylated CREB protein. Also functions as acetyltransferase for nonhistone targets. Acetylates 'Lys-131' of ALX1 and acts as its coactivator in the presence of CREBBP.
Synonyms:	KAT3B; p300; RSTS2



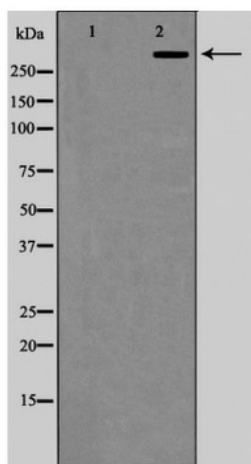
[View online »](#)

**Note:** P300/CBP Antibody detects endogenous levels of total P300/CBP

**Protein Families:** Druggable Genome, Transcription Factors

**Protein Pathways:** Adherens junction, Cell cycle, Huntington's disease, Jak-STAT signaling pathway, Long-term potentiation, Melanogenesis, Notch signaling pathway, Pathways in cancer, Prostate cancer, Renal cell carcinoma, TGF-beta signaling pathway, Wnt signaling pathway

### Product images:



Western blot analysis of P300/CBP expression in COLO205 cells