

## Product datasheet for **TA348038**

### **p15 INK4b (CDKN2B) Rabbit Polyclonal Antibody**

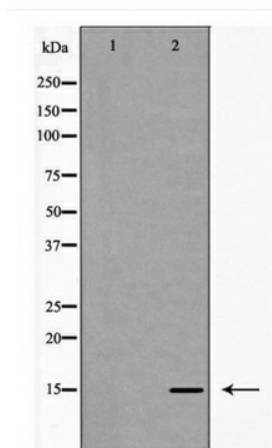
#### **Product data:**

<b>Product Type:</b>	Primary Antibodies
<b>Applications:</b>	WB
<b>Recommended Dilution:</b>	WB: 1:500-1:2000
<b>Reactivity:</b>	Human, Mouse, Rat
<b>Host:</b>	Rabbit
<b>Isotype:</b>	IgG
<b>Clonality:</b>	Polyclonal
<b>Immunogen:</b>	The immunogen for anti-p15 INK Antibody: A synthesized peptide derived from human p15 INK
<b>Formulation:</b>	Rabbit IgG in phosphate buffered saline , pH 7.4, 150mM NaCl, 0.02% sodium azide and 50% glycerol.Store at -20 ?.Stable for 12 months from date of receipt
<b>Concentration:</b>	lot specific
<b>Purification:</b>	Immunogen affinity purified
<b>Conjugation:</b>	Unconjugated
<b>Storage:</b>	Store at -20°C as received.
<b>Stability:</b>	Stable for 12 months from date of receipt.
<b>Predicted Protein Size:</b>	15 kDa
<b>Gene Name:</b>	cyclin-dependent kinase inhibitor 2B
<b>Database Link:</b>	<a href="#">NP_511042</a> <a href="#">Entrez Gene 12579 Mouse</a> <a href="#">Entrez Gene 25164 Rat</a> <a href="#">Entrez Gene 1030 Human</a> <a href="#">P42772</a>
<b>Background:</b>	Interacts strongly with CDK4 and CDK6. Potent inhibitor. Potential effector of TGF-beta induced cell cycle arrest.
<b>Synonyms:</b>	CDK4I; INK4B; MTS2; P15; p15INK4b; TP15
<b>Note:</b>	p15 INK Antibody detects endogenous levels of total p15 INK
<b>Protein Families:</b>	Druggable Genome
<b>Protein Pathways:</b>	Cell cycle, Pathways in cancer, Small cell lung cancer, TGF-beta signaling pathway



[View online »](#)

## Product images:



Western blot analysis of p15 INK expression in HeLa cell extract