

Product datasheet for **TA348036**

Cytokeratin 16 (KRT16) Rabbit Polyclonal Antibody

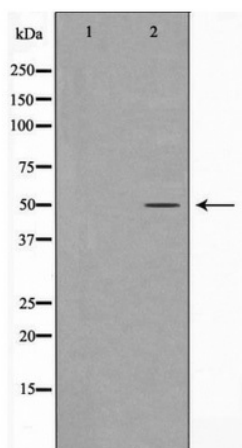
Product data:

Product Type:	Primary Antibodies
Applications:	WB
Recommended Dilution:	WB: 1:500-1:2000
Reactivity:	Human, Mouse, Rat
Host:	Rabbit
Isotype:	IgG
Clonality:	Polyclonal
Immunogen:	The immunogen for anti-Keratin 16 Antibody: A synthesized peptide derived from human Keratin 16
Formulation:	Rabbit IgG in phosphate buffered saline , pH 7.4, 150mM NaCl, 0.02% sodium azide and 50% glycerol.Store at -20 ?.Stable for 12 months from date of receipt
Concentration:	lot specific
Purification:	Immunogen affinity purified
Conjugation:	Unconjugated
Storage:	Store at -20°C as received.
Stability:	Stable for 12 months from date of receipt.
Predicted Protein Size:	51 kDa
Gene Name:	keratin 16
Database Link:	NP_005548 Entrez Gene 16666 MouseEntrez Gene 303530 RatEntrez Gene 3868 Human P08779
Background:	Expressed in the hair follicle, nail bed and in mucosal stratified squamous epithelia and, suprabasally, in oral epithelium and palmoplantar epidermis. Also found in luminal cells of sweat and mammary gland ducts.
Synonyms:	CK16; FNEPPK; K1CP; K16; KRT16A; NEPPK; PC1
Note:	Keratin 16 Antibody detects endogenous levels of total Keratin 16



[View online »](#)

Product images:



Western blot analysis of Keratin 16 expression in HepG2 cell extract