

Product datasheet for **TA348033**

Ku70 (XRCC6) Rabbit Polyclonal Antibody

Product data:

Product Type:	Primary Antibodies
Applications:	WB
Recommended Dilution:	WB: 1:500-1:2000
Reactivity:	Human, Mouse, Rat
Host:	Rabbit
Isotype:	IgG
Clonality:	Polyclonal
Immunogen:	The immunogen for anti-Ku70/80 Antibody: A synthesized peptide derived from human Ku70/80
Formulation:	Rabbit IgG in phosphate buffered saline , pH 7.4, 150mM NaCl, 0.02% sodium azide and 50% glycerol.Store at -20 ?.Stable for 12 months from date of receipt
Concentration:	lot specific
Purification:	Immunogen affinity purified
Conjugation:	Unconjugated
Storage:	Store at -20°C as received.
Stability:	Stable for 12 months from date of receipt.
Predicted Protein Size:	70, 82 kDa
Gene Name:	X-ray repair complementing defective repair in Chinese hamster cells 6
Database Link:	NP_001460 Entrez Gene 14375 Mouse Entrez Gene 25019 Rat Entrez Gene 2547 Human P12956
Background:	The Ku autoantigen is a heterodimer of 70kDa (p70) and 80kDa (p80) proteins. The p70 / p80 dimer is important for function of a 460kDa DNA-dependent protein kinase that phosphorylates certain transcription factors, including Sp1, Oct-1, p53, and SV40 large T antigen in vitro. The Ku protein plays a role in cell signaling, proliferation, DNA repair, replication, transcriptional activation, and apoptosis.
Synonyms:	CTC75; CTCBF; G22P1; KU70; ML8; TLAA

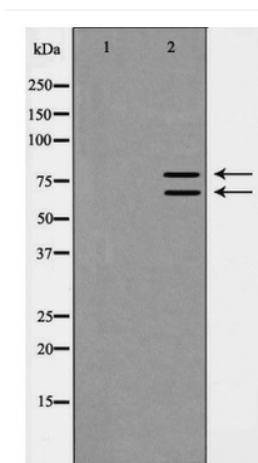

[View online »](#)

Note: Ku70/80 Antibody detects endogenous levels of total Ku70/80

Protein Families: Druggable Genome, Transcription Factors

Protein Pathways: Non-homologous end-joining

Product images:



Western blot analysis of Ku70/80 expression in LoVo cell lysate