

Product datasheet for **TA348032**

RHOH Rabbit Polyclonal Antibody

Product data:

Product Type:	Primary Antibodies
Applications:	WB
Recommended Dilution:	WB: 1:500-1:2000
Reactivity:	Human, Mouse, Rat
Host:	Rabbit
Isotype:	IgG
Clonality:	Polyclonal
Immunogen:	The immunogen for anti-RhoH Antibody: A synthesized peptide derived from human RhoH
Formulation:	Rabbit IgG in phosphate buffered saline , pH 7.4, 150mM NaCl, 0.02% sodium azide and 50% glycerol.Store at -20 ?.Stable for 12 months from date of receipt
Concentration:	lot specific
Purification:	Immunogen affinity purified
Conjugation:	Unconjugated
Storage:	Store at -20°C as received.
Stability:	Stable for 12 months from date of receipt.
Predicted Protein Size:	21 kDa
Gene Name:	ras homolog family member H
Database Link:	NP_004301 Entrez Gene 74734 MouseEntrez Gene 305341 RatEntrez Gene 399 Human Q15669
Background:	Negative regulator of hematopoietic progenitor cell proliferation, survival and migration. Critical regulator of thymocyte development and T-cell antigen receptor (TCR) signaling by mediating recruitment and activation of ZAP70. Required for phosphorylation of CD3Z, membrane translocation of ZAP70 and subsequent activation of the ZAP70-mediated pathways.
Synonyms:	ARHH; TTF
Note:	RhoH Antibody detects endogenous levels of total RhoH

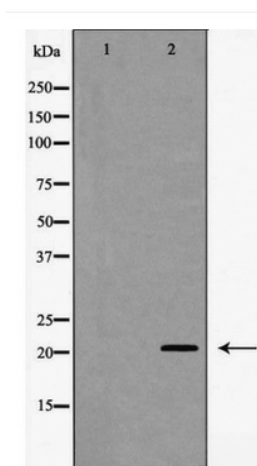


[View online »](#)

Protein Families: Transcription Factors

Protein Pathways: Leukocyte transendothelial migration

Product images:



Western blot analysis of RhoH expression in RAW 264.7 cell lysates