

Product datasheet for **TA348029**

Metabotropic Glutamate Receptor 8 (GRM8) Rabbit Polyclonal Antibody

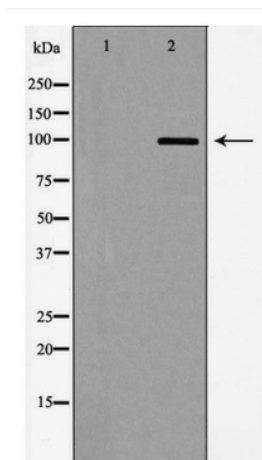
Product data:

Product Type:	Primary Antibodies
Applications:	WB
Recommended Dilution:	WB: 1:500-1:2000
Reactivity:	Human, Mouse, Rat
Host:	Rabbit
Isotype:	IgG
Clonality:	Polyclonal
Immunogen:	The immunogen for anti-GluR8 Antibody: A synthesized peptide derived from human GluR8
Formulation:	Rabbit IgG in phosphate buffered saline , pH 7.4, 150mM NaCl, 0.02% sodium azide and 50% glycerol.Store at -20 ?.Stable for 12 months from date of receipt
Concentration:	lot specific
Purification:	Immunogen affinity purified
Conjugation:	Unconjugated
Storage:	Store at -20°C as received.
Stability:	Stable for 12 months from date of receipt.
Predicted Protein Size:	102 kDa
Gene Name:	glutamate metabotropic receptor 8
Database Link:	NP_000836 Entrez Gene 14823 Mouse Entrez Gene 60590 Rat Entrez Gene 2918 Human O00222
Background:	FunctionReceptor for glutamate. The activity of this receptor is mediated by a G-protein that inhibits adenylate cyclase activity.
Synonyms:	GLUR8; GPRC1H; mGlu8; MGLUR8
Note:	GluR8 Antibody detects endogenous levels of total GluR8
Protein Families:	Druggable Genome, GPCR, Transmembrane
Protein Pathways:	Neuroactive ligand-receptor interaction



[View online »](#)

Product images:



Western blot analysis of GluR8 expression in Mouse brain extract