

## Product datasheet for **TA348028**

### Metabotropic Glutamate Receptor 3 (GRM3) Rabbit Polyclonal Antibody

#### Product data:

Product Type:	Primary Antibodies
Applications:	WB
Recommended Dilution:	WB: 1:500-1:2000
Reactivity:	Human, Mouse, Rat
Host:	Rabbit
Isotype:	IgG
Clonality:	Polyclonal
Immunogen:	The immunogen for anti-GluR2/3 Antibody: A synthesized peptide derived from human GluR2/3
Formulation:	Rabbit IgG in phosphate buffered saline , pH 7.4, 150mM NaCl, 0.02% sodium azide and 50% glycerol.Store at -20 ?.Stable for 12 months from date of receipt
Concentration:	lot specific
Purification:	Immunogen affinity purified
Conjugation:	Unconjugated
Storage:	Store at -20°C as received.
Stability:	Stable for 12 months from date of receipt.
Predicted Protein Size:	100 kDa
Gene Name:	glutamate metabotropic receptor 3
Database Link:	<a href="#">NP_000831</a> <a href="#">Entrez Gene 24416 Rat</a> <a href="#">Entrez Gene 108069 Mouse</a> <a href="#">Entrez Gene 2913 Human</a> <a href="#">Q14832</a>
Background:	L glutamate is the major excitatory neurotransmitter in the central nervous system and activates both ionotropic and metabotropic glutamate receptors. Glutamatergic neurotransmission is involved in most aspects of normal brain function and can be perturbed in many neuropathologic conditions.
Synonyms:	GLUR3; GPRC1C; mGlu3; MGLUR3
Note:	GluR2/3 Antibody detects endogenous levels of total GluR2/3

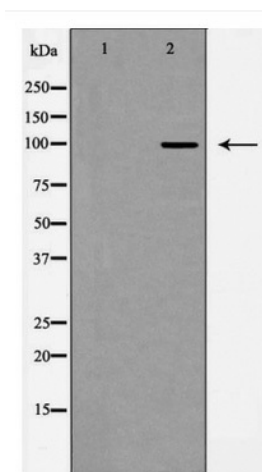


[View online »](#)

Protein Families: Druggable Genome, GPCR, Transmembrane

Protein Pathways: Neuroactive ligand-receptor interaction

**Product images:**



Western blot analysis of GluR2/3 expression in mouse brain