

Product datasheet for **TA348025**

IPP 2 (PPP1R2) Rabbit Polyclonal Antibody

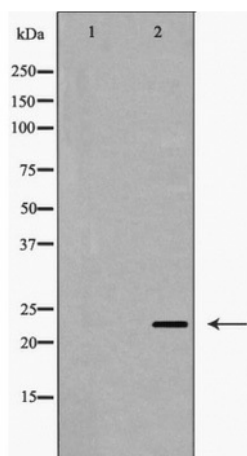
Product data:

Product Type:	Primary Antibodies
Applications:	WB
Recommended Dilution:	WB: 1:500-1:2000
Reactivity:	Human, Mouse, Rat
Host:	Rabbit
Isotype:	IgG
Clonality:	Polyclonal
Immunogen:	The immunogen for anti-PPP1R2 Antibody: A synthesized peptide derived from human PPP1R2
Formulation:	Rabbit IgG in phosphate buffered saline , pH 7.4, 150mM NaCl, 0.02% sodium azide and 50% glycerol.Store at -20 ?.Stable for 12 months from date of receipt
Concentration:	lot specific
Purification:	Immunogen affinity purified
Conjugation:	Unconjugated
Storage:	Store at -20°C as received.
Stability:	Stable for 12 months from date of receipt.
Predicted Protein Size:	23 kDa
Gene Name:	protein phosphatase 1 regulatory inhibitor subunit 2
Database Link:	NP_006232 Entrez Gene 66849 Mouse Entrez Gene 192361 Rat Entrez Gene 5504 Human P41236
Background:	Phosphorylation on Thr-73 by GSK3 activates PP1 by dissociating the PP1-PPP1R2 complex (By similarity). Phosphorylation on Ser-44 by ATM activates PP1 by dissociating the PP1-PPP1R2 complex.
Synonyms:	IPP-2; IPP2
Note:	PPP1R2 Antibody detects endogenous levels of total PPP1R2
Protein Families:	Druggable Genome



[View online »](#)

Product images:



Western blot analysis of PPP1R2 expression in Jurkat cells