

Product datasheet for **TA348024**

Cyclin E2 (CCNE2) Rabbit Polyclonal Antibody

Product data:

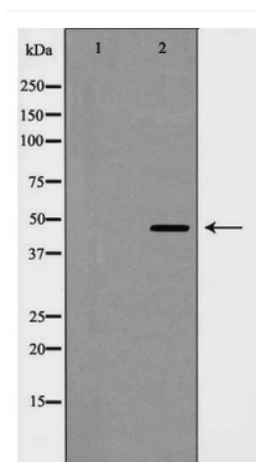
| | |
|-------------------------|--|
| Product Type: | Primary Antibodies |
| Applications: | WB |
| Recommended Dilution: | WB: 1:500-1:2000 |
| Reactivity: | Human, Mouse |
| Host: | Rabbit |
| Isotype: | IgG |
| Clonality: | Polyclonal |
| Immunogen: | The immunogen for anti-Cyclin E2 Antibody: A synthesized peptide derived from human Cyclin E2 |
| Formulation: | Rabbit IgG in phosphate buffered saline , pH 7.4, 150mM NaCl, 0.02% sodium azide and 50% glycerol.Store at -20 ?.Stable for 12 months from date of receipt |
| Concentration: | lot specific |
| Purification: | Immunogen affinity purified |
| Conjugation: | Unconjugated |
| Storage: | Store at -20°C as received. |
| Stability: | Stable for 12 months from date of receipt. |
| Predicted Protein Size: | 47 kDa |
| Gene Name: | cyclin E2 |
| Database Link: | NP_477097 Entrez Gene 12448 Mouse Entrez Gene 9134 Human O96020 |
| Background: | The human Cyclin E2 gene encodes a 404 amino acid protein that is most closely related to Cyclin E. Cyclin E2 mRNA levels peaks at the G1 / S transition. Cyclin E2 associates with Cdk2 in a functional kinase complex that is inhibited by both p27 (Kip1) and p21 (Cip1). |
| Synonyms: | CYCE2 |
| Note: | Cyclin E2 Antibody detects endogenous levels of total Cyclin E2 |
| Protein Families: | Druggable Genome |



[View online »](#)

Protein Pathways: Cell cycle, Oocyte meiosis, p53 signaling pathway, Pathways in cancer, Prostate cancer, Small cell lung cancer

Product images:



Western blot analysis of Cyclin E2 expression in COLO cells