

Product datasheet for **TA348023**

5 HT1A (HTR1A) Rabbit Polyclonal Antibody

Product data:

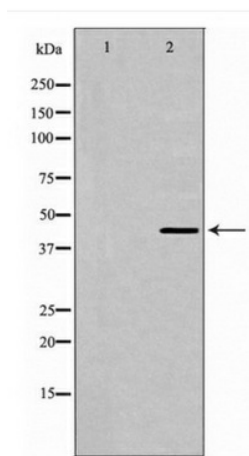
Product Type:	Primary Antibodies
Applications:	WB
Recommended Dilution:	WB: 1:500-1:2000
Reactivity:	Human, Mouse, Rat
Host:	Rabbit
Isotype:	IgG
Clonality:	Polyclonal
Immunogen:	The immunogen for anti-5-HT-1A Antibody: A synthesized peptide derived from human 5-HT-1A
Formulation:	Rabbit IgG in phosphate buffered saline , pH 7.4, 150mM NaCl, 0.02% sodium azide and 50% glycerol.Store at -20 ?.Stable for 12 months from date of receipt
Concentration:	lot specific
Purification:	Immunogen affinity purified
Conjugation:	Unconjugated
Storage:	Store at -20°C as received.
Stability:	Stable for 12 months from date of receipt.
Predicted Protein Size:	46 kDa
Gene Name:	5-hydroxytryptamine receptor 1A
Database Link:	NP_000515 Entrez Gene 15550 Mouse Entrez Gene 24473 Rat Entrez Gene 3350 Human P08908
Background:	This is one of the several different receptors for 5-hydroxytryptamine (serotonin), a biogenic hormone that functions as a neurotransmitter, a hormone, and a mitogen. The activity of this receptor is mediated by G proteins that inhibit adenylate cyclase activity.
Synonyms:	5-HT-1A; 5-HT1A; 5HT1a; ADRB2RL1; ADRBRL1; G-21; PFMCD
Note:	5-HT-1A Antibody detects endogenous levels of total 5-HT-1A
Protein Families:	Druggable Genome, GPCR, Transmembrane



[View online »](#)

Protein Pathways: Neuroactive ligand-receptor interaction

Product images:



Western blot analysis of 5-HT-1A expression in HepG2 cells