

Product datasheet for **TA348022**

53BP1 (TP53BP1) Rabbit Polyclonal Antibody

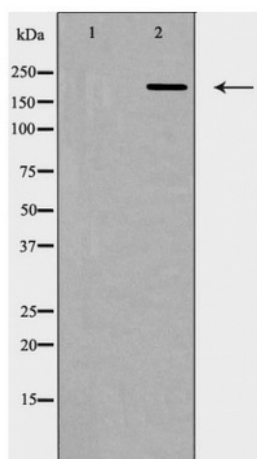
Product data:

Product Type:	Primary Antibodies
Applications:	WB
Recommended Dilution:	WB: 1:500-1:2000
Reactivity:	Human, Mouse
Host:	Rabbit
Isotype:	IgG
Clonality:	Polyclonal
Immunogen:	The immunogen for anti-53BP1 Antibody: A synthesized peptide derived from human 53BP1
Formulation:	Rabbit IgG in phosphate buffered saline , pH 7.4, 150mM NaCl, 0.02% sodium azide and 50% glycerol.Store at -20 ?.Stable for 12 months from date of receipt
Concentration:	lot specific
Purification:	Immunogen affinity purified
Conjugation:	Unconjugated
Storage:	Store at -20°C as received.
Stability:	Stable for 12 months from date of receipt.
Predicted Protein Size:	214 kDa
Gene Name:	tumor protein p53 binding protein 1
Database Link:	NP_005648 Entrez Gene 7158 Human Q12888
Background:	Binds to the central domain of p53/TP53. May form homooligomers. Interacts with DCLRE1C. Interacts with histone H2AFX and this requires phosphorylation of H2AFX on 'Ser-139'. Interacts with histone H4 that has been dimethylated at 'Lys-20' (H4K20me2). Has low affinity for histone H4 containing monomethylated 'Lys-20' (H4K20me1).
Synonyms:	53BP1; p202
Note:	53BP1 Antibody detects endogenous levels of total 53BP1
Protein Families:	Druggable Genome, Transcription Factors



[View online »](#)

Product images:



Western blot analysis of 53BP1 expression in HUVEC cells