

Product datasheet for **TA348021**

Myosin Phosphatase (PPP1R12A) Rabbit Polyclonal Antibody

Product data:

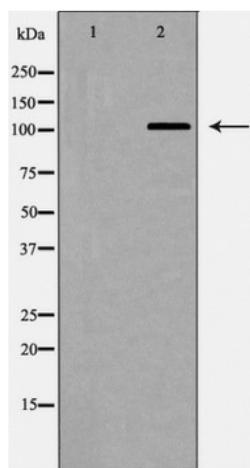
Product Type:	Primary Antibodies
Applications:	WB
Recommended Dilution:	WB: 1:500-1:2000
Reactivity:	Human, Mouse, Rat
Host:	Rabbit
Isotype:	IgG
Clonality:	Polyclonal
Immunogen:	The immunogen for anti-MYPT1 Antibody: A synthesized peptide derived from human MYPT1
Formulation:	Rabbit IgG in phosphate buffered saline , pH 7.4, 150mM NaCl, 0.02% sodium azide and 50% glycerol.Store at -20 ?.Stable for 12 months from date of receipt
Concentration:	lot specific
Purification:	Immunogen affinity purified
Conjugation:	Unconjugated
Storage:	Store at -20°C as received.
Stability:	Stable for 12 months from date of receipt.
Predicted Protein Size:	115 kDa
Gene Name:	protein phosphatase 1 regulatory subunit 12A
Database Link:	NP_002471 Entrez Gene 17931 MouseEntrez Gene 116670 RatEntrez Gene 4659 Human Q14974
Background:	Heterotetramerization is mediated by the interaction between a coiled-coil of PRKG1 and the leucine/isoleucine zipper of PPP1R12A/MBS, the myosin-binding subunit of the myosin phosphatase.
Synonyms:	M130; MBS; MYPT1
Note:	MYPT1 Antibody detects endogenous levels of total MYPT1
Protein Families:	Druggable Genome



[View online »](#)

Protein Pathways: Focal adhesion, Long-term potentiation, Regulation of actin cytoskeleton, Vascular smooth muscle contraction

Product images:



Western blot analysis of MYPT1 expression in NIH/3T3 cell extract