

## Product datasheet for **TA348020**

### **Myl12b Rabbit Polyclonal Antibody**

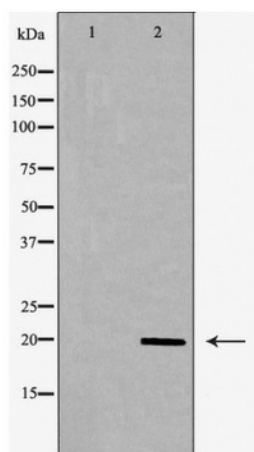
#### **Product data:**

<b>Product Type:</b>	Primary Antibodies
<b>Applications:</b>	WB
<b>Recommended Dilution:</b>	WB: 1:500-1:2000
<b>Reactivity:</b>	Human, Mouse, Rat
<b>Host:</b>	Rabbit
<b>Isotype:</b>	IgG
<b>Clonality:</b>	Polyclonal
<b>Immunogen:</b>	The immunogen for anti-MRLC2 Antibody: A synthesized peptide derived from human MRLC2
<b>Formulation:</b>	Rabbit IgG in phosphate buffered saline , pH 7.4, 150mM NaCl, 0.02% sodium azide and 50% glycerol.Store at -20 ?.Stable for 12 months from date of receipt
<b>Concentration:</b>	lot specific
<b>Purification:</b>	Immunogen affinity purified
<b>Conjugation:</b>	Unconjugated
<b>Storage:</b>	Store at -20°C as received.
<b>Stability:</b>	Stable for 12 months from date of receipt.
<b>Predicted Protein Size:</b>	20 kDa
<b>Gene Name:</b>	myosin, light chain 12B, regulatory
<b>Database Link:</b>	<a href="#">NP_075891</a> <a href="#">Entrez Gene 50685 RatEntrez Gene 103910 HumanEntrez Gene 67938 Mouse</a> <a href="#">Q3THE2</a>
<b>Background:</b>	Myosin regulatory subunit that plays an important role in regulation of both smooth muscle and nonmuscle cell contractile activity via its phosphorylation. Implicated in cytokinesis, receptor capping, and cell locomotion.
<b>Synonyms:</b>	MLC-2; MLC-2A; MLC-B; MLC20; MRLC2; MYLC2B; OTTHUMP00000165808; SHUJUN-1
<b>Note:</b>	MRLC2 Antibody detects endogenous levels of total MRLC2



[View online »](#)

## Product images:



Western blot analysis of MRLC2 expression in K562 cell extract