

Product datasheet for **TA348013**

Caveolin 2 (CAV2) Rabbit Polyclonal Antibody

Product data:

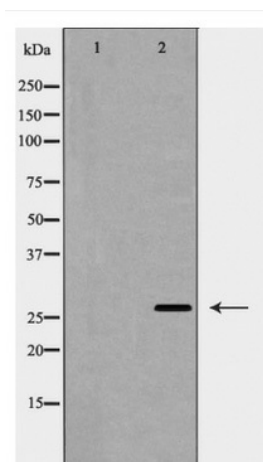
Product Type:	Primary Antibodies
Applications:	WB
Recommended Dilution:	WB: 1:500-1:2000
Reactivity:	Human
Host:	Rabbit
Isotype:	IgG
Clonality:	Polyclonal
Immunogen:	The immunogen for anti-Caveolin 2 Antibody: A synthesized peptide derived from human Caveolin 2
Formulation:	Rabbit IgG in phosphate buffered saline , pH 7.4, 150mM NaCl, 0.02% sodium azide and 50% glycerol.Store at -20 ?.Stable for 12 months from date of receipt
Concentration:	lot specific
Purification:	Immunogen affinity purified
Conjugation:	Unconjugated
Storage:	Store at -20°C as received.
Stability:	Stable for 12 months from date of receipt.
Predicted Protein Size:	27 kDa
Gene Name:	caveolin 2
Database Link:	NP_937855 Entrez Gene 858 Human P51636
Background:	May act as a scaffolding protein within caveolar membranes. Interacts directly with G-protein alpha subunits and can functionally regulate their activity. Acts as an accessory protein in conjunction with CAV1 in targeting to lipid rafts and driving caveolae formation.
Synonyms:	CAV
Note:	Caveolin 2 Antibody detects endogenous levels of total Caveolin 2
Protein Families:	Druggable Genome, Transmembrane



[View online »](#)

Protein Pathways: Focal adhesion

Product images:



Western blot analysis of Caveolin 2 expression in Human fetal lung lysate