

Product datasheet for **TA348012**

EIF4B Rabbit Polyclonal Antibody

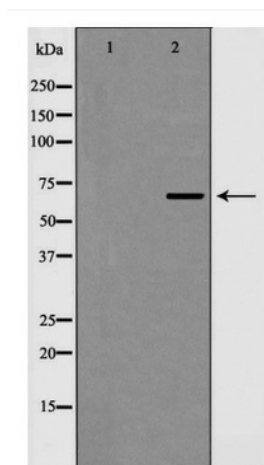
Product data:

| | |
|-------------------------|----------------------------------------------------------------------------------------------------------------------------------------------------------------------------------------------------------------------------------------------------------------------------------|
| Product Type: | Primary Antibodies |
| Applications: | WB |
| Recommended Dilution: | WB: 1:500-1:2000 |
| Reactivity: | Human, Mouse |
| Host: | Rabbit |
| Isotype: | IgG |
| Clonality: | Polyclonal |
| Immunogen: | The immunogen for anti-eIF4B Antibody: A synthesized peptide derived from human eIF4B |
| Formulation: | Rabbit IgG in phosphate buffered saline , pH 7.4, 150mM NaCl, 0.02% sodium azide and 50% glycerol.Store at -20 ?.Stable for 12 months from date of receipt |
| Concentration: | lot specific |
| Purification: | Immunogen affinity purified |
| Conjugation: | Unconjugated |
| Storage: | Store at -20°C as received. |
| Stability: | Stable for 12 months from date of receipt. |
| Predicted Protein Size: | 69 kDa |
| Gene Name: | eukaryotic translation initiation factor 4B |
| Database Link: | NP_001408 Entrez Gene 75705 Mouse Entrez Gene 1975 Human P23588 |
| Background: | Required for the binding of mRNA to ribosomes. Functions in close association with EIF4-F and EIF4-A. Binds near the 5'-terminal cap of mRNA in presence of EIF-4F and ATP. Promotes the ATPase activity and the ATP-dependent RNA unwinding activity of both EIF4-A and EIF4-F. |
| Synonyms: | EIF-4B; PRO1843 |
| Note: | eIF4B Antibody detects endogenous levels of total eIF4B |
| Protein Pathways: | mTOR signaling pathway |



[View online »](#)

Product images:



Western blot analysis of eIF4B expression in HepG2 cells