

Product datasheet for **TA348009**

GRO alpha (CXCL1) Rabbit Polyclonal Antibody

Product data:

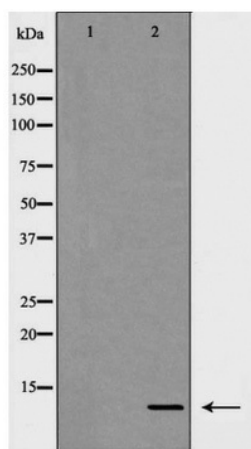
Product Type:	Primary Antibodies
Applications:	WB
Recommended Dilution:	WB: 1:500-1:2000
Reactivity:	Human, Mouse, Rat
Host:	Rabbit
Isotype:	IgG
Clonality:	Polyclonal
Immunogen:	The immunogen for anti-GRO alpha: A synthesized peptide derived from human GRO alpha
Formulation:	Rabbit IgG in phosphate buffered saline , pH 7.4, 150mM NaCl, 0.02% sodium azide and 50% glycerol.Store at -20 ?.Stable for 12 months from date of receipt
Concentration:	lot specific
Purification:	Immunogen affinity purified
Conjugation:	Unconjugated
Storage:	Store at -20°C as received.
Stability:	Stable for 12 months from date of receipt.
Predicted Protein Size:	11 kDa
Gene Name:	C-X-C motif chemokine ligand 1
Database Link:	NP_001502 Entrez Gene 14825 Mouse Entrez Gene 81503 Rat Entrez Gene 2919 Human P09341
Background:	Has chemotactic activity for neutrophils. May play a role in inflammation and exerts its effects on endothelial cells in an autocrine fashion. In vitro, the processed forms GRO-alpha(4-73), GRO-alpha(5-73) and GRO-alpha(6-73) show a 30-fold higher chemotactic activity.
Synonyms:	FSP; GRO1; GROa; MGSA; MGSA-a; NAP-3; SCYB1
Note:	GRO alpha detects endogenous levels of total GRO alpha
Protein Families:	Druggable Genome, Secreted Protein



[View online »](#)

Protein Pathways:

Chemokine signaling pathway, Cytokine-cytokine receptor interaction, Epithelial cell signaling in Helicobacter pylori infection, NOD-like receptor signaling pathway

Product images:

Western blot analysis of GRO alpha expression in Jurkat cell lysate