

Product datasheet for **TA348008**

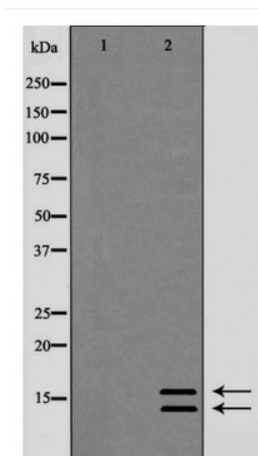
LC3B (MAP1LC3B) Rabbit Polyclonal Antibody

Product data:

| | |
|-------------------------|--|
| Product Type: | Primary Antibodies |
| Applications: | WB |
| Recommended Dilution: | WB: 1:500-1:2000 |
| Reactivity: | Human, Mouse, Rat |
| Host: | Rabbit |
| Isotype: | IgG |
| Clonality: | Polyclonal |
| Immunogen: | The immunogen for anti-lc3A/B: A synthesized peptide derived from human lc3A/B |
| Formulation: | Rabbit IgG in phosphate buffered saline , pH 7.4, 150mM NaCl, 0.02% sodium azide and 50% glycerol.Store at -20 ?.Stable for 12 months from date of receipt |
| Concentration: | lot specific |
| Purification: | Immunogen affinity purified |
| Conjugation: | Unconjugated |
| Storage: | Store at -20°C as received. |
| Stability: | Stable for 12 months from date of receipt. |
| Predicted Protein Size: | 14.16 kDa |
| Gene Name: | microtubule associated protein 1 light chain 3 beta |
| Database Link: | NP_073729 Entrez Gene 64862 RatEntrez Gene 67443 MouseEntrez Gene 81631 Human Q9GZQ8 |
| Background: | Ubiquitin-like modifier involved in formation of autophagosomal vacuoles (autophagosomes). Plays a role in mitophagy which contributes to regulate mitochondrial quantity and quality by eliminating the mitochondria to a basal level to fulfill cellular energy requirements and preventing excess ROS production. |
| Synonyms: | 1BLC3; ATG8F; LC3B; MAP1A; MAP1LC3B-a |
| Note: | lc3A/B detects endogenous levels of total lc3A/B |



[View online »](#)

Product images:

Immunohistochemical analysis of paraffin-embedded breast carcinoma tissue using Phospho-Akt (Ser473) Antibody.